

LOW VISION AIDS AND MAGNIFIERS

Catalogue 2012



LOW VISION AIDS AND MAGNIFIERS

Catalogue 2012



The aim of this catalogue is to demonstrate a competitively priced range of low vision aids (LVA) devices to work alongside non optical care. Not only for people who are partially sighted, but also for normally sighted people to use at work, around the home, or in leisure and hobby activities where magnification is required.

The number of people with low vision in the UK is expected to double to four million by 2050. Of the current two million, around 370,000 people are on the blind or partially sighted registers in England and Wales. It is estimated that there are 25,000 children under 16 who have a significant visual impairment. This shows that for every person on these registers there are possibly another 3 or 4 people who are unidentified but in need of low vision support.

The rise in numbers is due to various factors, including obesity, diabetic retinopathy, cataract AMD and old age. 50% of the over 90s are living with sight loss. The appropriate appliance, spectacles or a low vision aid would utilise their vision and potentially enhance their life style. As there is no cure for AMD expected in the foreseeable future, early detection, adaptation to using LVAs, and local access have never been more important.



Today there is a wide range and types of optical LVAs available to people with low vision, in various strengths, powers and designs. Many patients have a general understanding of the term magnifiers, but may not be aware of the phrase 'low vision aids', which includes magnifiers and specialist tints and coatings such as the PLS (UV)600 and the VISTA-MESH lens, what they are used for, and how to use them efficiently. This catalogue contains a wide range of products; wherever possible both the equivalent power and magnification are stated. In the majority of cases the magnification stated is nominal magnification.

LVA devices can also take the form of a non-optical format, eg. anti-glare filters, electronic LVA devices like Close Circuit Television (CCTV) or video magnifiers. These electronic devices have recently developed significantly and can provide features and performance not possible with conventional appliances. All have the same purpose: to increase the size of an image and make things easier to see.

It is important that people with low vision make the best use of their sight; magnifiers and other low vision devices enable them to see and do everyday tasks more easily and to lead independent lives.



To place an order, or for more information on any product, please contact:

Tel: 01452 510321
Fax: 01452 510331
Email: sales@norville.co.uk

The Norville Group,
 Magdala Road,
 Gloucester GL1 4DG

www.norville.co.uk

GLOSSARY OF TERMS

A simple explanation of some of the technical terms used.

- AMD* *Age-related macular degeneration (also called ARMD), the most common cause of sight impairment in later life.*
- Ametropia* *In need of spectacle correction, this term covers astigmatism, long and short sightedness.*
- Aspheric* *A complex surface curve used to minimise lens aberrations.*
- Bi-aspheric* *Bi-aspheric means an aspheric curve applies to both surfaces.*
- Field of view* *How wide an area you can see, e.g. how many words on a page you are able to see with each magnifier.*
- Focal length* *Decided by the power of the lens, it is shorter for stronger lenses. It is the distance at which the lens focuses light from a source.*
- LED* *Light emitting diode (a type of light source giving a white light).*
- Lens aberrations* *These are the annoying curving, distorting and rainbow effects seen at the edges of a magnifier.*
- Lens aperture* *The diameter of the lens.*
- Low vision practitioner* *An eye care professional who specialises in assessing sight impaired users and prescribes magnifying aids, usually an optician.*
- LVA* *Low vision aid.*
- Presbyope* *A person who has normal sight but has reached the stage of middle & presbyopia age where reading glasses are needed, a normal part of the ageing process in the eye.*
- Residual vision* *The vision that a sight impaired person has left (or Remaining vision).*
- Task lighting* *Having a lamp close to and pointing at what you are looking at. A specialist lamp used for near or close-up tasks.*
- Working distance* . . . *The distance between your eye and the thing you are looking at.*

BI-CONVEX HAND HELD MAGNIFIER

Transparent plastic frame, lightweight lens. Magnifiers c, d, e and h have an additional lens in the handle.

a	261465	65mm	3x	e	2612801	80mm	2.25x
b	261480	80mm	2.5x	f	2614150	100 x 50mm	2x
c	2612401	40mm	3.2x	g	2614840	80 x 40mm	2.5x
d	2612601	60mm	2.5x	h	26129501	90 x 50mm	2x



ESCHENBACH

OMEGA BIFOCAL HAND HELD MAGNIFIER

Plastic frame. Hardcoated plastic lenses with D shape bifocal. Free display stand available.

a	1110-P	50mm	3x/4.5x
b	1120-P	65mm	2.5x/4x
c	1130-P	75mm	2x/4x
d	1140-P	90mm	2x/4x
e	1150-P	100mm	2x/4x



COMPACT HAND

Lightweight design with ergonomic handle, plastic bifocal lens.

a	1550-P	75mm	2x and 4x
---	--------	------	-----------



PREMIERE HAND HELD MAGNIFIER

Wooden handles, chrome plated frame. High quality white glass lenses. Free display stand available.

a	1421	65mm	3x	b	1431	75mm	2.5x
c	1441	90mm	2.5x	d	1451	100mm	2x
e	1461	115mm	1.8x				



RECTANGULAR HAND HELD MAGNIFIER

Plastic handles, chrome plated frame. Glass lenses. Free display stand available.

a	1510	40 x 75mm	2.5x
b	1520	45 x 90mm	2.5x
c	1530	50 x 100mm	2x



ASPHERIC OMEGA HAND HELD MAGNIFIER

Plastic frame. Aspheric hardcoated plastic lens.

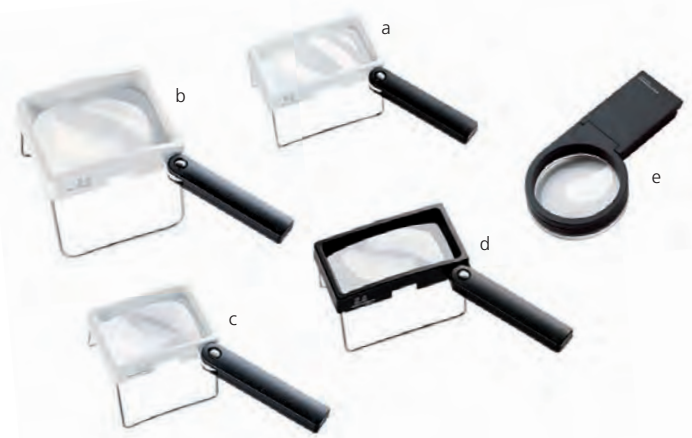
a	AS-14	90mm	3.5x
---	-------	------	------



HAND/STAND MAGNIFIER

Lightweight design with ergonomic handle.

a	2031	100 x 50mm	2.6x
b	2032	100 x 75mm	2.8x
c	2034	75 x 50mm	3.5x
d	2036	100 x 50mm	2.6x
e	20501	60mm	2.5x



APLANATIC

Ergonomic shape handle for comfortable grip. Special lens design which is distortion free right up to the edge.

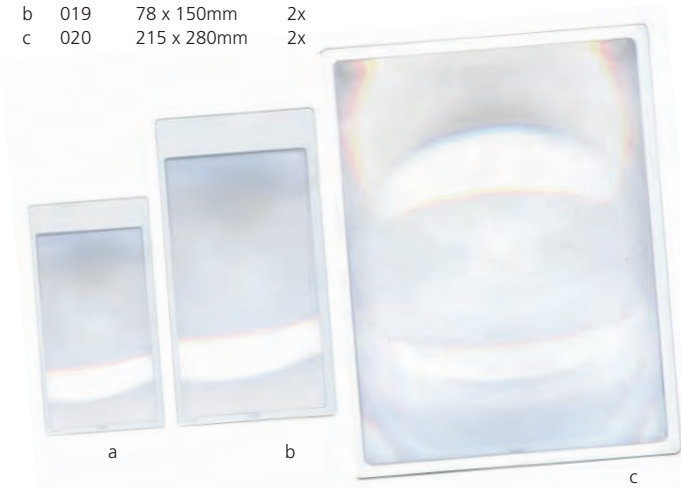
a	2668950	90 x 50mm	2.7x
b	266860	90 x 60mm	3.8x
c	266875	90 x 75mm	2.9x
d	266850	90 x 50mm	4.5x



SHEET MAGNIFIERS

Flat sheet Fresnel magnifiers. Protective case included with a & b.

a	184	55 x 85mm	3.5x
b	019	78 x 150mm	2x
c	020	215 x 280mm	2x



NEWS READER 1000 NEW

Fresnel magnifier in mount with hand grip. Main lens 168 x 119mm, x2 magnification with x4 round 34mm inset portion



MOBILUX LED NEW DESIGN

This new design is lightweight with an ergonomic handle, a large light switch and white LED light. Scratch resistant aspheric lenses. Protective case.

a	15112	60mm	3x	e	15117	35mm	7x
b	15113	75 x 50mm	3.5x	f	151110	35mm	10x
c	15114	60mm	4x	g	151112	35mm	12.5x
d	15115	58mm	5x				



ILLUMINATED MAGNIFIER

Plastic bodies with glass lenses on a, b and d. Plastic lens with D shape bifocal on c. Battery powered illumination.

a	L170	90mm	2.5x
b	L150	65mm	3x
c	L170-P	90mm	2x/4x
d	HL60	60mm	3x



LED HAND ILLUMINATED *NEW*

Lightweight hand held with battery powered LED illumination.

- a LE-65 65mm 3x
- b LE-75 75mm 2.5x
- c LE-90 90mm 2x

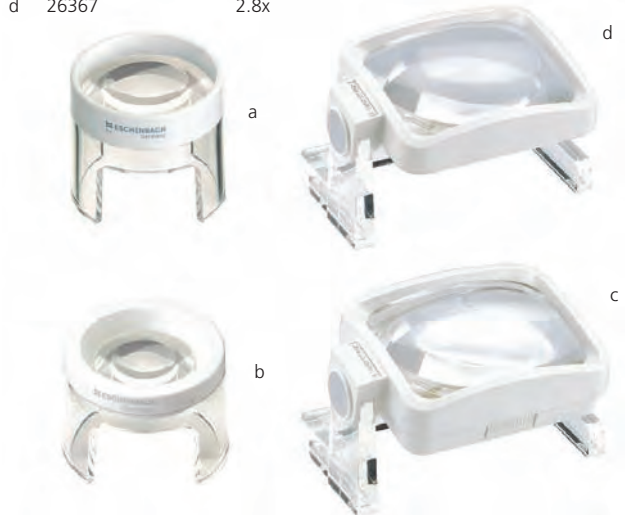


ASPHERIC STAND

Aspheric hardcoated lenses.



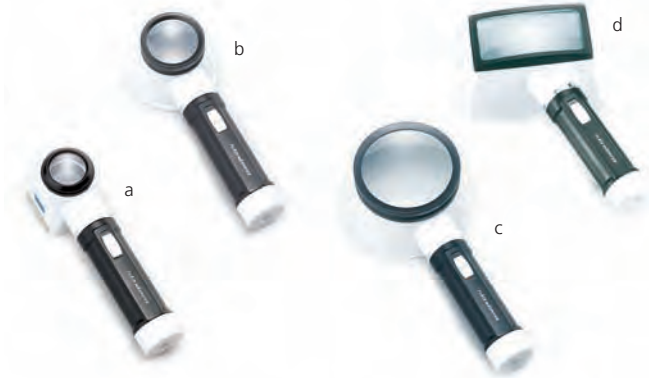
- a 2626 50mm 6x
- b 2628 35mm 10x
- c 263611 2.8x (detachable second lens)
- d 26367 2.8x



ILLUMINATED STAND MAGNIFIER

Metal and plastic bodies with glass lenses. Battery powered illuminated cups.

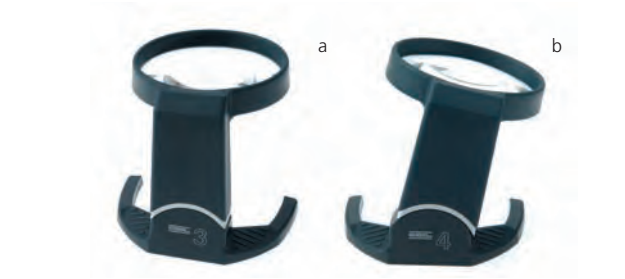
- a M170 30mm 7x
- b M335 45mm 3.5x
- c M320 80mm 2x
- d M50 45 x 90mm 2.5x



HI POWER STAND

Cantilever stand construction allows access for working or writing underneath. Tilting Head.

- a 5213 81mm 3x
- b 5214 80mm 4x



SYSTEM VARIO LED

Lightweight design with ergonomic handle and LED illumination.

- a 155074 35mm 10x
- b 155174 35mm 7x
- c 155274 50mm 6x
- d 155394 58mm 5x
- e 155494 70mm 4x
- f 155774 35mm 12.5x
- g 155994 80mm 3x
- h 158064 100 x 50mm 3x
- i 158264 100 x 75mm 2.8x



POWERLUX *NEW*

Available in two different light temperatures. Two opposed position LEDs give shadow-free illumination. Auto switch off function.

- a 158614 58mm 3.5x 8000k (cold light)
- a 1586141 58mm 3.5x 3000k (warm light)
- a 158620 58mm 5x 8000k (cold light)
- a 1586201 58mm 5x 3000k (warm light)
- a 158628 58mm 7x 8000k (cold light)
- a 1586281 58mm 7x 3000k (warm light)



MENAS LUX ILLUMINATED STAND *NEW*

Ultra flat design with large visual field. Integral illumination.

- a 143830 63mm 3x



STAND

Metal base with glass lens.
 a 1630 75mm 2.5x

MINI STAND

Mini glass lens mounted on small metal base.
 b 7030 28mm 10x

FLEXISTAND

Glass lens on flexible arm mounted on metal base.
 c 1650 90mm 2.5x

G-CLAMP FLEXI

Metal construction with glass lens on flexible arm with G-clamp.
 d 1780 130mm 1.8x



GOOSE NECK

Plastic easibend gooseneck mounts. Hard coated plastic lens with D segment.

- a 1720-PC 100mm 2x/4x Bifocal lens
- b 1720-PS 100mm 2x/4x Bifocal lens
- c 1730 140 x 193mm 1.8x Fresnel lens



EMBROIDERY

Plastic hard coated lens with D shape bifocal.

- a 6500P 100mm 2x/4x



WIDE VIEW STAND

Hard coated plastic lens with additional 4x and 7x magnification lenses.

- a 1795 110 x 145mm 1.8x



BOOKSTAND MAGNIFIER DZ5

Adjustable angle and focal distance with page grip, Size: 250 x 300mm, 1.8x Fresnel lens

- a DZ5 1.8x



VTM LINE READER & VTM CLEAR READER

The Clear VTM reader has darkened edges and clear centre section for increased contrast, where the VTM Line reader has a reading line to align with text. Either style is available in red or blue, has a durable soft grip surround and comes complete with a protective sleeve.

- a 110mm 1.1x Clear
- b 110mm 1.1x Reading line



DIRECTORY

Pearl line. Protective sleeve included.

- a 750 25 x 150mm 2x



PAPERWEIGHT

Glass lens in swivelling metal mount.

b 1870 65mm 3x



DESK LOUPE

Glass lens, plastic mount.

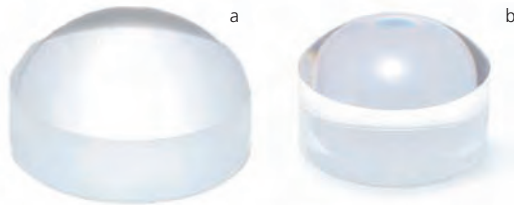
a 1830 75mm 3x



DESK LENS

Clear sided magnifier maximising natural light. Glass or plastic.

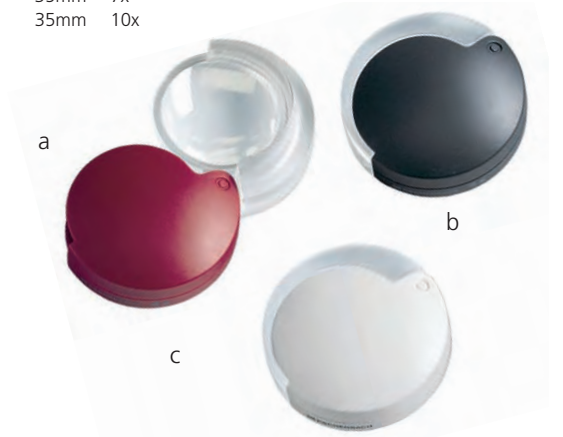
a 1880 Glass lens 60mm 5x
b 1885 Plastic lens 50mm 4x



FOLDING POCKET

Glass lens folding into rigid protective sleeve.

a 171014 35mm 4x
b 171067 35mm 7x
c 1710910 35mm 10x



METAL POCKET

Glass lenses in a metal swivel body. Storage pouch included. Leather pouch on c.

a 7060 25mm 8x
b 7070 20mm 3x / 4x / 5x (3 lenses)
c 7090 15mm 20x Achromatic lens



METAL POCKET

Glass lens folding into protective pocket.

a 7025 13mm 16x
b 7055 20mm 12x

SLEEVE POCKET

Glass lens folding into metal protective sleeve.

c 7950 36mm 4x
d 7960 36mm 4x / 4x



SLEEVE Pocket

Glass lens folding into protective sleeve. Leather sleeve on c.

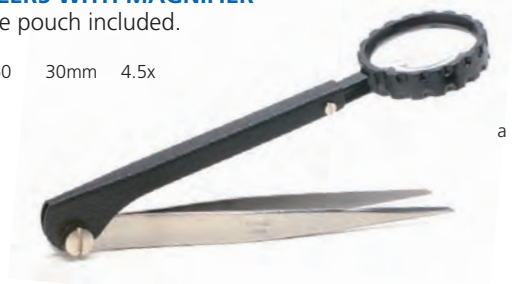
a 3120 45mm 3.5x
b 3122 65mm 3x
c 3135 50mm 3.5x
d 3180 45 x 65mm 2.5x



TWEEZERS WITH MAGNIFIER

Storage pouch included.

a 1960 30mm 4.5x



LORNETTE PENDANT **NEW**

Glass lens in acetate mount. Presentation case and soft drawstring bag included.

- a 330-3.5k 3.5 dioptres Khaki frame, silver chain
- b 330-2.5OR 2.5 dioptres Sherry frame, gold chain



PENDANT

Glass lens in silver or gold colour mount. Presentation case included.

- a 323S 35mm 4x Silver
- b 323G 35mm 4x Gold



WATCHMAKERS EYEGLASSES

Glass lenses in plastic mounts.

- a 7300 15mm 10x
- b 7210 23mm 4x
- c 7220 23mm 5x
- d 7230 23mm 6x



LINEN TESTER

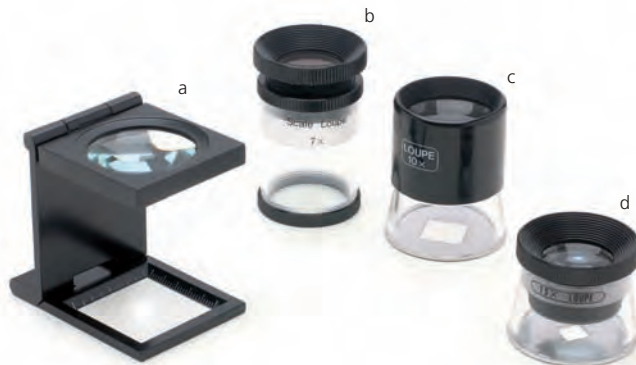
Scale marked in mm and 1/8th inch up to 25mm. Metal construction with glass lens.

- a 7550 6x

SCALE LOUPE

Glass Achromatic lenses. Removable scale on b, c and d.

- b SL7A 7x Scale 0-20mm in 0.1mm steps
- c SL10 10x Scale 0-10mm in 0.2mm steps
- d SL15 15x Scale 0-6mm in 0.1mm steps



MONOCULAR

Closed size: 70mm. Rubber eyecup.

- a Evolution 40 4x 12 16cm – Infinity
- b Evolution 50 5x 10 25cm – Infinity
- c Evolution 60 6x 16 25cm – Infinity



TELESCOPIC AID KM-820

Closed size: 95mm. Rubber eyecup. Strap loop.

Shortest focus: 30cm at 11x
Infinity at 8x
Field of view: 12m at 100m



SPECTACLE BINOCULAR

Hard case and cleaning cloth included.

a HF10B 2.5x

CLIP-ON BINOCULAR

Hard case and cleaning cloth included.

b HF20B 2.5x



HEAD BINOCULAR

1.8x fixed lens, plus 2.5x flip up lens to give total of 3.3x

a BM110 1.8x/2.5x

ADDITIONAL HIGH POWER LENSES

b BM100 B1 2.3x, BM100 C1 2.7x, BM100 D1 3.5x



CLIP-ON SPECTACLE TELESCOPE

Achromatic Keplerian telescope. Convenient clip to attach to the user's glasses. Focuses from 12" to infinity.

a MC282RC 28mm 2.8x



MEGAVIEW MG3

Unit consists of three interchangeable, hard coated acrylic lenses.

- 2x, 2.5x, 3x
- Focal Length: 300mm, 250mm, 150mm.



MEGAVIEW MG20

Lightweight and comfortable, unit consists of four interchangeable, hard coated acrylic lenses. LED illumination, adjustable headband.

- 2x, 2.5x, 3x, and 4x monocular.
- Focal Length: 280mm, 200mm, 140mm, 65mm.
- Takes 3 AAA batteries



AMIGO

- Slim (less than 2") and lightweight (1.3 lbs.)
- Digital magnification from 3.5x to 14x
- Large field of view
- Large viewing screen - 165mm
- Removable standard battery with internal charger (spare battery included)
- 6 viewing modes, including 2 Colour Select options
- Writing stand and Carrying Case
- Connects with TVs for increased magnification
- Freeze frame function.



LOOKY

- Can be used at home, at work, at school or out and about
- LCD display 3.5 inches
- Magnification between 3 and 8 times
- Only 200 grams
- Folding handle
- User-friendly - only 2 buttons
- Camera in the middle of the monitor, so you see immediately what you want to examine
- Easily adjusted to a position which aids the user in writing
- Equipped with rechargeable batteries. Also works with regular batteries
- A handy carrying case with a free key cord
- Full colour, black/white or white/black modes
- Freeze frame function. This enables the user to freeze the image on the LCD screen, making viewing easier.



PEBBLE

- Adjustable magnification of 2x to 10x
- Lightweight 7.7 ounce design
- 3.5" high resolution LCD display
- Adjustable brightness
- Easy-to-use tactile controls
- 6 viewing modes



COMPACT+

- Single button controls magnification and viewing modes
- Snapshot button takes a temporary picture
- 5x, 7.5x and 10x Magnification
- 4.3 inch LCD Screen
- 5 viewing modes
- Collapsible handgrip for extra support
- Mains adaptor, rechargeable batteries, neck cord & carrying pouch all included.



MAX

For a powerful and affordable digital magnifier that is simple to use, look no further than Max. Use this lightweight, hand-held portable device on any straight or curved surface to magnify images and text from 15x to 28x! Move Max over books, newspapers, magazines or even medicine labels and read with ease. Max connects quickly to any TV or monitor and is ideal for use at work, school or even on holiday.





The Norville Group, Magdala Road, Gloucester GL1 4DG
Tel: 01452 510321 • Fax: 01452 510331
Email: sales@norville.co.uk

www.norville.co.uk

