

NORVILLE

— AN INSPECS GROUP PLC COMPANY —



Practice & Workshop  
Equipment & Supplies

[www.norville.co.uk](http://www.norville.co.uk)

# Alphabetical Index

PRODUCT	PAGE	PRODUCT	PAGE	PRODUCT	PAGE	PRODUCT	PAGE
A.B.D.O. Rule	7	Finger Piece Plier	41	Needle Variety Kit	33	Screwdriver Trublue Aluminium	39
Abraflox Powder	57	Finger Piece Plier	47	Needles - Replacement	34	Screwdriver Wooden Handle	39
Adhesive Pad and Cup Holders	54	Finger Piece Plier Micro Range	50	No-Bake Scratch Resistant Coat	23	Screwdriver, Nut Wrench and Screw Ring Set	40
Air Duster Spray	32	Flat Nose 4mm Plier	52	Norville Autoflow Frame Heater	26	Screwdriver/Locknut Driver Set	40
Alcohol Dispenser	21	Foam Cleaner Spray	32	Nose Pad Adjusting Plier	43	Screwless Rimless Compressing Plier - Lab Use	49
Alignment Rule	6	Foamdoctor - silicon free	57	Nose Pad Adjusting Plier	45	Screws Rimless Glazing	27
Amesler Chart Manual	5	Focimeter - Hand Held	24	Nose Pad Adjusting Plier	52	Screws Temple / Glazing	27
Assembly Plier	53	Focimeter Printer Paper	21	Nose Pad Adjusting Plier Micro Range	49	Screws Temple / Glazing / Pad	27
Barrel Aligning Plier	47	Frame Pouch - Foam	20	Nose Pad Inserting Plier	49	Selyvt Cloths	32
Bench Anvil Kit	36	Frame Selector	8	Nose Pad Popping Plier	50	Setting Plier	52
Bendsnipe Plier	50	Frame Tray (Plastic)	18	Nose Pads	28	Shootout Frame Repair Multi-tool Kit	35
Bent Front Cutting Plier	53	Freeman Occluderule	11	NUC II Organic Lens Polish	57	Side Cutter Plier	50
Block Remover Plier	52	Gas Torch	34	Nuts & Washers	27	Side Cutting Plier	48
Block Removing Plier	52	Get-A-Grip Driver Cushions Set	39	Oblique Head End Cutting Plier	48	Sizing and Screw Inserting Plier	43
Blocking Buttons	54	Glass polishing pads	56	Oblique Head End Cutting Plier for Hard Metals	49	Solution 30 Lens Cleaner	32
Blue Lens Former	55	Half Round Long Nose Snipe Plier	52	Oculus UB4	50	Spectacle Pinhole Occluder	11
BPI Lens Dyes	22	Hard Wire Side Cutting Plier	50	Pad Adjustment Plier	8	Sponge - Large	59
Bridge Reducing Plier	45	Harsant LVA Folding Test Chart	4	Pad Arm Curving Plier	45	Sponge - Small	59
Budgie Stick	10	Head width adjustment rings	29	Pad Screws	27	Spring Hinge Plier Kit	35
Buffing Wheel (Takubomatic)	58	Heat Shrink Tube	29	Pad Set	27	Spring Hinge Plier Kit	47
Butane Gas Refill	34	Hepta Rule	7	Parallel Jaw Flat Plier	45	Standard Optical Rule	6
Cerox	57	Holding Nylon Plier	52	Parallel Jaw Round Plier	45	Standard Pads	55
Chinagraph pencil	21	HT Gauge	12	PD Extender Rule	6	Strain Tester	24
City Rule	7	Hydrophobic Pads	55	PD Meter (The Pupilometer)	24	Suction Cup Holders	54
City Rule Aluminium	7	Hypo-tube cement	33	PD3 Rule	52	Suction Pad Holders	54
Cleaning Solution NR24	26	Inclination (Nylon Jaw) Plier	51	Peening Plier	6	Supra Clear Figure 8 Liner	31
Clear Clipper	16	Inclination Fine Jaw Plier	51	Penlight	11	Supra Clear Round Liner	31
Clipper Holder Options	16	Ink cartridge marker unit	59	Pentel Sign Pen	21	Supra cord	31
Combo Flat Chain Nose/Delrin Plier	41	Ink cartridge unit	59	Permanent marker	21	Supra Mounter	31
Combo Flat Chain Nose/Delrin Plier	46	Ishihara Colour Test Books	5	Photochromic Lens Demonstrator	24	Supra Mounting Tool	31
Combo Pad Arm/Nose Pad Adjusting Plier	45	Job Trays 3-Compartment Rx	20	Pin Point Oil	33	Supra Regular 'V' Liner	31
Combo Round Chain Nose/Delrin Plier	41	Job Trays Extra Sturdy Laboratory/Dispensing	20	Pin Tong	34	Surface Guard Hi-Tack	58
Combo Round Chain Nose/Delrin Plier	46	Jumbo Lens Thickness Caliper	12	PJ Double Delrin Jaw Plier	44	Surface Improvement Pad	55
Combo Round Chain Nose/Delrin Plier Micro Range	49	Kay Animated Stick	10	PJ Pantoscopic Tilt Fingertiece Plier	44	Surface Saver Tape 3M	58
Concorde Tungsten Carbide End Cutting Plier	48	Kay Fixation Sticks	10	PJ Temple Angling Plier	44	Swarf Removal Tool	38
Concorde Tungsten Carbide Side Cutting Plier	48	Key ring Screwdriver Stand	18	Plastic polishing pads	56	Takubomatic NH30V Hand Edger	60
Confirmation Test Adjustable Four Lens	10	Label Printer Tape Cassettes	19	Plating Pens	31	Temple Bending Plier	46
Confirmation Test Fixed Four Lens	10	Labman 'J' Lens Rule	6	Plier Rack	37	Temple Covers Slim Fit	29
Confirmation Test Two Lens	10	Laboratory Millimetre Rule 7"	6	Pocket Clip Reversible	39	Temple Tamer	35
Coolant Oil	57	Lacquer	31	Pocket Optical Rule	6	Temple Tip Silicone	30
Cradle Clip	16	Lens Adjustment Plier	51	Polarising Axis Verifier Gauge	24	Temple Width Calipers	12
Cross Cylinder Single	10	Lens Blocks	54	Polish (Brown)	57	Terms & Conditions	61
Cross Cylinders Set	10	Lens Grip Spray	56	Polish (Light Brown)	57	Test Chart - 3m	4
Crystal Rims with Handle	18	Lens Harpoon	38	Polishing Stick	57	Test Chart - 6m	4
Curl Ends Silicone	30	Lens holder - Slant	23	Polycarbonate polishing pads	56	The Stealth Screwdriver	38
Curved Holding Slotted Nylon Plier	51	Lens holder - UV White	23	Posters	15	Thermometer	23
Curved Tip Nose Chain Plier	47	Lens holder Standard	23	Precision Steel Rule 20cm	6	Tilt Angle Gauge	7
Cushion Pads in Silicone AirTec	29	Lens Marking Ink	21	Premium Pads	55	Tool Kit - Large	40
Cutting Plier	53	Lens Measure Traditional	13	Prism Bars in Case	11	Tool Kit - Small	40
Cyrex Invisible Washers	31	Lens Packet - Double with flap	20	Pyrex Beakers	23	Tool Rack Acrylic	37
Deblocking Plier	48	Lens Packet - Single	20	QuickFix Frame Rivets	35	Tool Rack Magnetic	37
Deblocking Plier 15mm round	48	Lens Pouch - Foam	20	R.A.F. Binocular Gauge	12	Tool Rack Metal	37
Deblocking Plier 15mm round with Metal Cap	48	Lens Setting Chart	7	Reading Test Card I	4	Tool Rack Wood	37
Defoamer	57	Lens Splitting Plier	48	Reading Test Card II	4	Tool Stand - Round	37
Deluxe Screwdriver Set	40	Lens Storage Box/Cabinet Dividers	12	Reading Test Card III	4	TOPCON LM-8 Focimeter	25
Demonstration Case	19	Lens Thickness Caliper	20	Reading Test Cards 'EL' Type A & B	4	Tray Tags - Additional	20
Demonstration Case Foam Inlay	19	Lens Thickness Gauge	12	Refill ink	21	Tri-Angling Plier	46
Demonstration Set Versatile	19	Lens Turning Plier 20mm or 25mm	47	Replacement Driver Blades	39	Trial Frame - 547	8
Diagonal Cutter Plier	51	Lever plate - Replacement	35	RF Special permanent marker	21	Trial Frame - Babies	8
Digital Caliper	12	LG Flat Nose Plier	45	Rim Curving Plier	51	Trial Frame - Clip-on	8
Digital Curve Clock	13	Lightbulbs	58	Rimless Compressing/Bracing Plier	42	Trial Frame - Universal	8
Digital Curve Clock 2 in 1	13	Locking Jaw Plier	52	Rimless dot marker	21	Trial Frames - Visor	8
Display - 4 Clip Slope	18	Loctite 290	33	Rimless Hole Gauge	36	Trial Lens Set	9
Display - 6 Clip Slope	18	Loctite 3491	33	Rimless Post Pulling Plier	49	Trial Lenses - Individual	8
Display Bars	17	Loctite 460	33	Rimless Tube Refresher	38	Tweezer Push-on pad Removal	34
Display Bars - Security	17	Loctite 480	33	Rimless Tube Stripper Plier	49	Tweezer Self-closing Fine Tip	34
Double Delrin Jaw Plier	42	Loctite Adhesives	33	Robin Rule	6	Twister Clip Displays	16
Double Delrin Jaw Plier	46	Loctite Glue Remover	33	Romanes Occluder	11	Ultra Clarity Lens Cleaner	32
Double Delrin Jaw Plier Micro Range	49	Long Nose Chain Plier	41	Round Nose Snipe Plier	51	Ultrasonic Cleaner CD-4800	26
Double Nylon Jaw Plier	45	Long Nose Chain Plier	47	Round/Flat Nose Plier	43	Universal Nut Grabber (Guild)	38
Double-Sided Rule	6	Long Nose Chain Plier Micro Range	50	Round/Flat Nose Plier	46	Universal Nut Grabber (Regular)	38
Dressing stick (Fine) White	57	Maga S Frame Heater	26	Rubber Guard Bench Block	36	UV Lens Multi-function Tester	24
Dressing stick Blue	57	Magnetic Clip Display	19	Rubber top Nosepiece	59	UV+ Scratch Resistant Coat	23
Dual Index Lens Measure	13	Magnetic Tint Sample Tree	19	Saddle Bridge	29	Ventilette 3 Frame Heater	26
Duratool Needle File Set	34	Mark On permanent marker	21	Screw and Nut Rimless Bracing Plier	42	Ver.O.glass cleaner	23
Dye Out Hand Cleaner	23	Metaflow 117	57	Screw Cutting Plier	51	Versatile Lens Twirl & Flip	10
Ear Locks - Large 35mm	30	Metal Glazing Plier	50	Screw Dial Boxes Empty	27	Vertex Distance Gauge Set	12
Ear Locks - Medium 26mm	30	Microfibre Cloths, Practice Size	32	Screw Finishing Tool	38	Vertical Height Strip	7
Ear Locks - Mini 17mm	30	Mini Screw Extractor (narrow jaw)	34	Screw Flaring Plier	42	WD40 Lubricating/Easing Oil	33
Eliminator Marking Ink Remover	21	Mini Screw Extractor (wide jaw)	34	Screw Loosening Fluid	33	Wet Erase Chalk Marker	21
Empty Oval Lorgnettes	18	Mini Tags	20	Screw Ring Set	40	White pen pupil marker	21
Empty Round Lorgnettes	18	Miniflam Soldering Spares	34	Screw Set	27	White Rims	18
Eyewire Closing Plier	47	Mirror Free Standing	14	Screw Trimmer & Miller	34	Wide Jaw Angling Plier	41
Eyewire Curving Press	36	Mirror Pedestal	14	Screwdriver - Ball Power Driver	39	Wide Jaw Angling Plier	46
Eyewire Forming Plier	42	Mirror Plastic Hand	14	Screwdriver - 4x4 Driver	38	Wing Clip	16
Eyewire Forming Plier	47	MK3 Optical Rule	6	Screwdriver - EZ Grip Driver	38	Wire Bracing Plier	41
Facial Measurement Gauge	7	Multi screwdriver	38	Screwdriver - Prestige	38	Wire Bracing Plier	46
Fairbanks Frame Rule	7	Narrow Eyewire and Bridge Forming Plier	42	Screwdriver - Reversible Driveshaft	39		
File Guard	36	Narrow Flush End Cutting Plier	43	Screwdriver - SU-8 Pick Up	39		

## Refraction & Dispensing

Test Charts & Reading Cards . . . . .	4
Contrast & Colour Tests . . . . .	5
Measuring Rules . . . . .	6
Measuring and Lens Setting . . . . .	7
Trial Frames & Clips . . . . .	8
Trial Sets . . . . .	9
Assessment & Accessories . . . . .	10–11
Measuring for Fitting . . . . .	12
Lens Thickness & Curvature . . . . .	13

## Practice Fitting

Mirrors . . . . .	14
Posters . . . . .	15
Frame Displays & Fittings . . . . .	16–18
Lens Demonstrators . . . . .	19
Pricing Sundries . . . . .	19

## Finishing Supplies

Job Trays, Tags & Dividers . . . . .	20
Lens Marking Sundries . . . . .	21
Tint Dyes . . . . .	22
Tinting Supplies . . . . .	23
Inspection & Verification Equipment . . . . .	24-25
Frame Heaters & Ultrasonic Cleaning . . . . .	26

## Frame & Glazing Components

Screws & Nuts . . . . .	27
Nose Pads . . . . .	28
Nose Pads & Temples . . . . .	29-30
Lens Liners & Supra Cords . . . . .	31
Plating Supplies . . . . .	31
Cleaning Solutions . . . . .	32

## Optical Tools

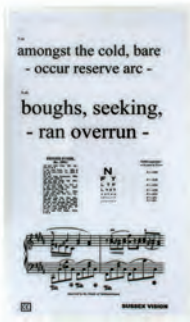
Adhesives, Sealants & Oils . . . . .	33
Hand Tools . . . . .	34-36
Tool Racks & Stands . . . . .	37
Tools & Screwdrivers . . . . .	38
Screwdrivers & Sets . . . . .	39-40
Pliers - Guild Range . . . . .	41-43
Pliers - Parallel Jaw Range . . . . .	44
Pliers . . . . .	45-53

## Edging Supplies

Pads, Surfacing & Polishing . . . . .	54-56
Surfacing & Glazing Consumables . . . . .	57-58
Lightbulbs . . . . .	58
Edging Equipment & Supplies . . . . .	59-60

Terms & Conditions . . . . .	61
------------------------------	----

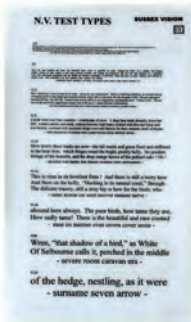
If you are unable to find what you require, please call us on 01452 510332 and we'll be more than happy to help.



▲ Reading Test Card I

Ref: RTC1

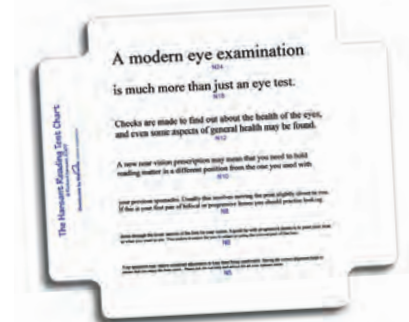
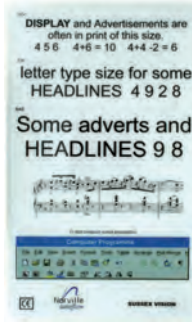
Double sided. N.5 to N.48 includes newsprint and music. Laminated.



▲ Reading Test Card II

Ref: RTC2

Double sided. N.4 to N.48 includes music, numbers and a VDU screen representation. The main text side has the largest N18 at the top, reducing to N4 at the bottom. Laminated.



▲ Norville Handy Reading Test Card III

Ref: RTC3

Double sided. Economical and ergonomic. N24 to N5. Wording by Harsant (same text on both sides).



▲ Three Metre Test Chart

Ref: TMTC

Non-reflective washable surface. Snellen test one side, child's picture test on the other. Laminated.



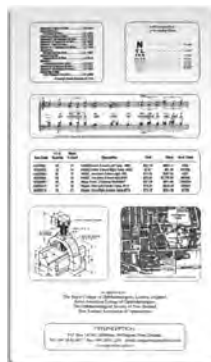
▲ Six Metre Test Chart + Hand Card

Ref: SMTC

Non reflective washable surface. Snellen test one side, illiterate 'E' on the other. Patient 'E' card has a reading test on the reverse. Laminated.

EL-type A

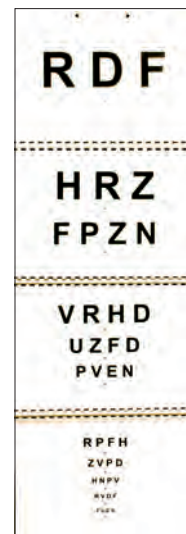
EL-type B



▲ 'EL' Reading Test Cards Type A & B

Ref: EL-type A Or Ref: EL-type B

Double sided reading cards. Type A: Face - from N5 at top to N48 at the bottom. Type B: Face - from N48 at top to N5 at the bottom. Reverse - an assortment of text and graphics. Size: 17 x 30cm



◀ Harsant LVA Folding Test Chart

Ref: 7003

Logarithmic distance vision chart using Snellen notation from 60 metres to 5 metres. Includes "Clinician's Card" with predicted near vision magnifications, additions when the chart is used at 3 metres and LogMAR equivalents. The chart is foldable and may be used hand-held at any distance.



#### ▲ Amsler Chart Manual

Ref: 234

An essential tool for visual screening purposes, it has been designed to disclose changes in the macular and foveal areas, which may be difficult, or in some cases impossible, to detect by other means. A full set of instructions describing their use and interpretation of results is supplied, together with recording charts.

**Spare pads** Ref: 234A



#### ▲ Ishihara Colour Test Books

Available as:

10 plate Ref: ICTB10

14 plate Ref: ICTB14

24 plate Ref: ICTB24

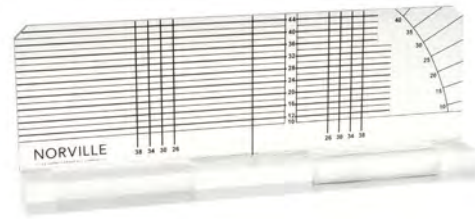
38 plate Ref: ICTB38



▲ **PD3 Rule**

Ref: 2069

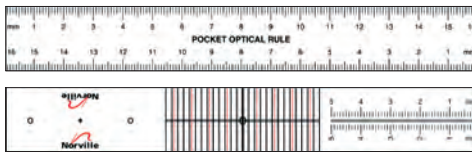
Three rules plus a pinhole occluder. Use the scales on this rule to measure binocular PD, monocular PD, seg height, bridge DBL of frame and eyewire A and B dimensions. A pinhole occluder tests visual acuity. 187mm long by 24.5 wide.



▲ **Alignment Rule**

Ref: ALR

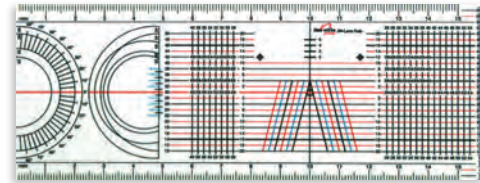
Clear acrylic rule with bottom rest. Horizontal lines for seg alignment and vertical mono p.d. markings. Side degree scale for wrap angle measurement.



▲ **Pocket Optical Rule**

Ref: MR

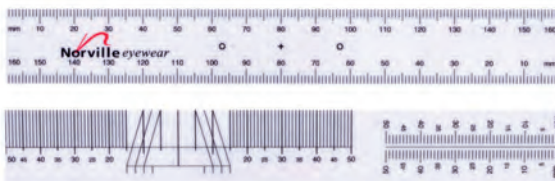
Sturdy 4mm thick rule. Standard mm markings on reverse. 160mm long



▲ **Labman 'J' Lens Rule**

Clear Ref: JR1 White Ref: JR2

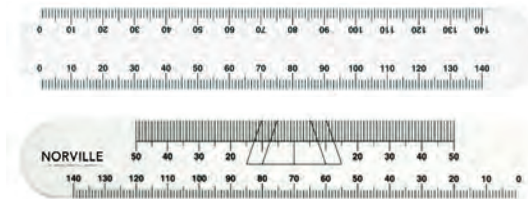
Designed by optical people for lab use. Clear design allows rule to be placed over mounted lenses. Three colour bridge centring grid. Extensive mono PD measuring grid, vertically and horizontally. Top and bottom full rule measuring.



▲ **Norville Double-Sided Rule**

Ref: MR-2016

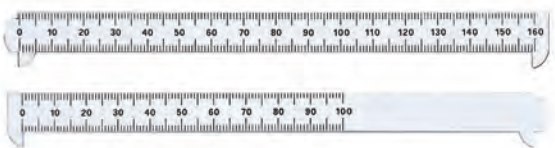
3mm thick rule with standard 0 - 160mm scale. Right and left handed.



▲ **Norville Standard Optical Rule**

Ref: NR

Robust rule with standard 0 - 140mm scale. Both right and left handed. Also has monocular P.D. facility.



▲ **Robin Rule** Ref: RR

18cm rule. Can be used to measure screw to bend, eyesize, frame p.d., optical centration etc.



▲ **MK3 Optical Rule** Ref: MK3

16cm rule. 2mm white perspex. Can be used to measure screw to bend, eyesize, frame p.d., optical centration etc. Peg and notch ends for speed and accuracy.



▲ **7" Laboratory Millimetre Rule** Ref: 2065

The ends of this rule are notched for easy and accurate eyewire readings. White numbers on red field run in opposition so that the rule always reads in the correct direction. Increases accuracy and eliminates fumbling.



▲ **PD Extender** Ref: 2067

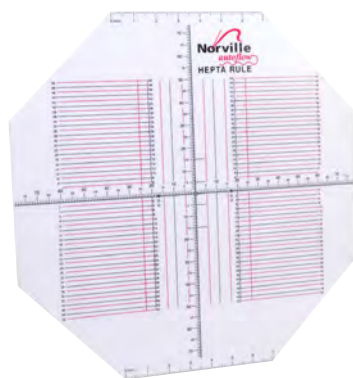
Accurately measures bifocal placement from the pupil to the lowest point on the eyewire. Great for taking box measurements. Clear plastic with black scale.



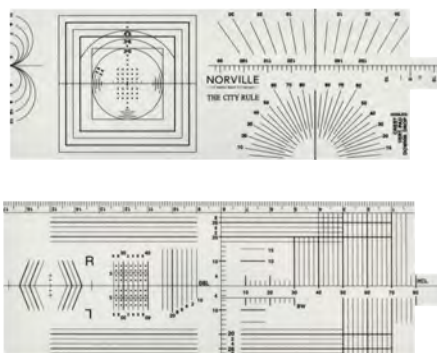
▲ **Precision Steel Rule**

20cm Ref: RE-105 15cm Ref: RE-104

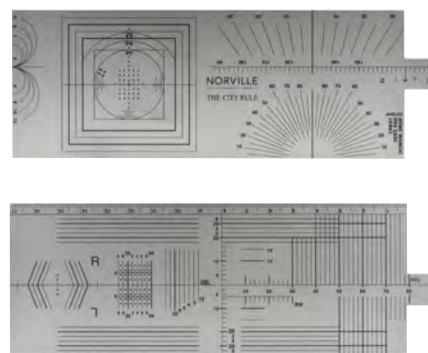
Reversible high grade steel rule, with 0.5mm and 1mm graduations.



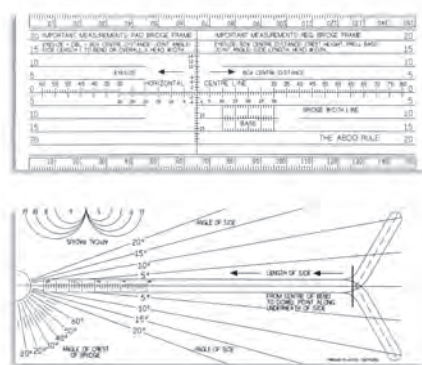
▲ **Hepta Rule** Ref: HP  
White plastic



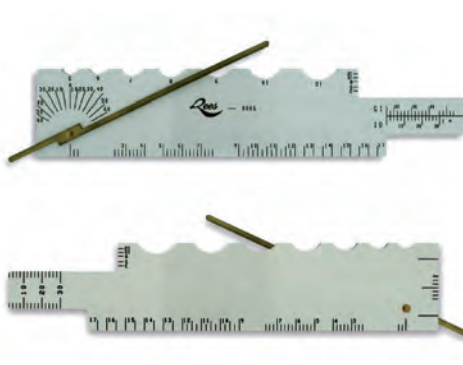
▲ **City Rule** Ref: CR  
Wide range of measurements. White plastic with black scales. Complete with instruction manual.



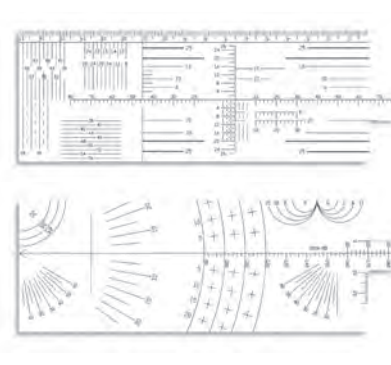
▲ **City Rule Aluminium** Ref: CRA  
Wide range of measurements. Aluminium with black scales. Complete with instruction manual.



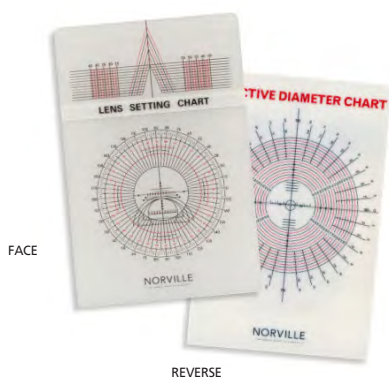
▲ **A.B.D.O. Rule** Ref: DFR  
White plastic, 155mm x 60mm. Measures 11 different frame dimensions. Complete with instruction manual.



▲ **Facial Measurement Gauge**  
Ref: 000600  
Double sided. Multifunctional. Takes almost all facial measurements. Complete with instruction manual.



▲ **Fairbanks Frame Rule**  
Ref: FFR  
Developed for teaching frame measurement techniques. Complete with instruction manual.



▲ **Lens Setting Chart**  
Ref: LSC  
21 x 14cm. Combined protractor, ELD chart, segment gauge and PD verifier.



▲ **Tilt Angle Gauge**  
Ref: TIA  
Simple swing gauge for tilt angle measurement. Works with 4, 6 or 8 base.

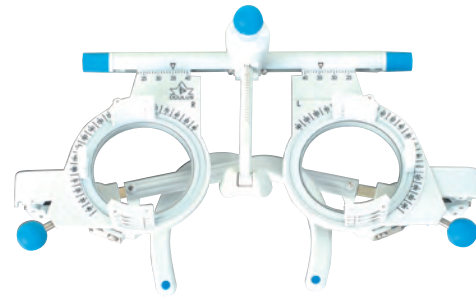


▲ **Vertical Height Strip**  
Self-clinging vinyl. Available with scales printed in either black or white on a clear vinyl. An easy way of verifying bifocal or PPL heights.  
50 Black Ref: VH50B  
100 Black Ref: VH100B  
50 White Ref: VH50W  
100 White Ref: VH100W



▲ **Babies Trial Frame** Ref: B100

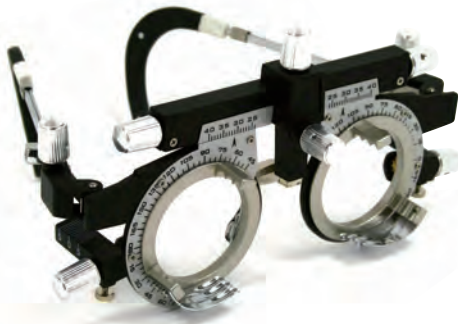
Refraction and control of visual acuity can be simple when the person who undergoes the test is at ease and collaborates. Babies however are unpredictable, they become suspicious if any device prevents the peripheral vision. The B-100 trial frame is always well balanced on the face because it is held at the back by elastic and allows the refractometer to have the patient's full concentration. Lens holder rings use standard 38mm trial lens sets. The B-100 trial frame comes in a small handy hard case.



▲ **Oculus UB4** Ref: 275

The increased awareness of topics such as toxicity and skin allergy, hygiene and recycling, as well as design, was a stimulus to create a new trial frame. It was important to retain previous features such as quality, range of adjustment, reliable engineering, durability and function.

- New operating elements for adjustment of cyl, axis, PD and bridge.
- Comfortable access for trial lens insertion.
- Modern spring mechanism for trial lens retention.
- Elegant mechanism for side angling.
- Constructed to avoid hair entrapment.
- A material selection allowing use of ultrasonic cleaning equipment and eliminating the need for lubricants.



▲ **Universal Trial Frame**

Ref: CT2202C

Adjustable bridge, side lengths and angle.  
P.D. range 48 - 80mm



▲ **Trial Frame** Ref: 547

P.D. 54 - 70mm. Titanium, stainless steel and aluminium lightweight build. One touch P.D. adjustment. Three front and one back cell per eye. Spring action temples. Adjustable temple angle. Anti-bacterial treatment to plastic temple ends.



◀ **Clip-on Trial Frame** Ref: CT2220

Set of two clip-on trial lenses in a box. Each trial lens can hold 3 lenses. Axis marking provided for use with cylinders. Rubber coating on the clips to protect the spectacle lens.



▲ **Frame Selector**

Ref: FRSEL

Sits behind frame. Takes one trial lens in each side to allow patient to judge acceptability of frame style.



▲ **Individual Trial Lenses**

Trial lenses can be provided to your requirements in either cyl or sphere, in either of the mounts displayed above.

Full aperture - Ref: ITLF

Reduced Aperture - Ref: ITRL



▲ **Visor for Trial Frames**

Available as: 90°/180° - Ref: 308A and 45°/135°

Ref: 246A also in red & green lens colours.



**◀ Trial Lens Set**Ref: **CT4322**

Full aperture. Clearly marked metal rims. 260 lens set containing concave and convex, spheres & cylinders. 14 piece prism set. Red, green, and frosted glass accessories. Cross cylinders provided. Weight 7Kg.





**▲ Adjustable Four Lens Confirmation Test**

Available in either +/- 0.25 set Ref: **AFL25**, or +/- 0.50 set Ref: **AFL50** (pairs of each opposite signs). Adjustable settings.



**▲ Fixed Four Lens Confirmation Test**

Available in either +/- 0.25 set Ref: **FFL25** or +/- 0.50 set Ref: **FFL50** (pairs of each opposite signs).



**▲ Two Lens Confirmation Test**

Available as either +/- 0.25 Ref: **TLT25** or +/- 0.50 Ref: **TLT50**



**▲ Cross Cylinder**

Single, 0.25 Ref: **CC25**, 0.50 Ref: **CC50**, 0.75 Ref: **CC75**, or 1.00D Ref: **CC1.0** cyls. Please state powers required.



**▲ Set of Cross Cylinders**

Ref: **SCC**  
One 0.25D, and one 0.50D. Aperture 36.5mm. Outside diameter 38mm. Supplied in black plastic box.



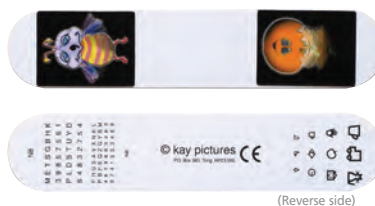
**▲ Versatile Lens Twirl & Flip**

Ref: **SCT4710E**  
Acetate white twirl -0.75/-1.25 sphere in box.



**▲ Kay Fixation Sticks**

Ref: **237**  
Set of three double sided. Dimensions: 155 x 33mm.



**▲ Kay Animated Stick**

Ref: **237A**  
Double sided. Dimensions: 155 x 33mm. With two 'animated' holograms on front.



**▲ Budgie Stick**

Ref: **238**  
Double sided. Dimensions: 147 x 17mm.



▲ Romanes Occluder

Ref: 761

This simple occluder is a useful trial case accessory. Primarily used as an occluder but can also be used to assess visual acuity and in the cover test.



▲ Freeman Occluderule

Ref: 503

This versatile dispensing rule covers all the needs of essential frame and facial measurements as well as occlusion and fixation. White both sides. Supplied in a protective case.



▲ Spectacle Pinhole Occluder

Ref: 279

This spectacle occluder is made of high impact resistant plastic. It features a multiple pinhole flipper that can be moved out of the way to observe the subject eye. The angled head keeps the patient's hand clear of the face. Can be sterilised with any non solvent based germicide.



▲ Prism Bars in Case

Vertical prism to 30 dioptres Ref: VB15

Horizontal prism to 45 dioptres Ref: HB16



▲ Penlight

Ref: PL

Uses 2 x AAA batteries (supplied).



### ▲ HT Gauge

Ref: WE260

Professional tool to measure the patient's head width and temple lengths. Very easy to use. Non-invasive of patient's space enabling a face-to-face position at all times rather than moving around with a ruler. Solid build quality with clear scales in mm.



### ▲ Temple Width Calipers

Ref: TWC

Measures both temple and head width. Comfortable for the patient. Red dots to indicate spectacle plane position.



### ▲ R.A.F. Binocular Gauge

Ref: 235

The Binocular gauge is used for determining the objective and subjective convergence points, examining the accommodation and determining the master eye.



### ▲ Vertex Distance Gauge Set

Ref: VDG

Contains gauge to measure lens to eye distance and conversion disc.



### ▲ Lens Thickness Caliper

Ref: OU102

38mm throat to measure up to 19mm lens thickness. Graduated in 2/10mm steps.

Spare nylon tips (pair) Ref:



### ▲ Jumbo Lens Thickness Caliper

Ref: JLC

45mm throat. Measures up to 23mm lens thickness. Vernier scale giving easy to read 1/10mm accuracy. Will accept lenses up to 90mm in diameter. Spare tips and springs available.



### ▲ Lens Thickness Gauge

Ref: 2060

Constructed of corrosion resistant brass and stainless steel. Has extra wide and deep jaws for use on lenses up to 86mm in diameter. Scale is in 1/10th millimeter. Soft spring and "delrin" tipped jaws are designed to protect soft lens material.



### ▲ Digital Caliper

Ref: CT41003

Durable stainless steel construction. 150mm/6" reads 0.1mm/0.005". Zero setting at any position, auto power off. Easily read display. Complete with hard carrying case. Replacement 1.5v button battery



▲ Digital Curve Clock

Ref: DBCC

This new digital base curve clock permits you to select the lens' correct refractive index before measuring its front and back curve. Measures 1.49 / 1.53 / 1.56 / 1.59 / 1.61 / 1.67 / 1.71 / 1.74. Comes with its own box.



▲ Dual Index Lens Measure

Ref: LM1.49

Dual refractive index 1.49 & 1.60 readings. Plus and minus measuring in 0.25 steps up to 20.00D. Storage box.



▲ Traditional Lens Measure

Ref: LM1.53

N= 1.53. Plus and minus measuring in 0.25 steps up to 20.00D. Storage box.



▲ Digital Curve Thickness Gauge 2 in 1

Ref: GP-DG002

Digital curve thickness gauge measures lens curve and centre thickness.



▲ **Pedestal Mirror**

Colours - Rose Gold Ref: 5526/15RG, Chrome Ref: 5526/15C  
 Plano / x5 magnification, 285mm high, 150mm diameter.  
 Comes in three pieces (mirror, base and column).



▲ **Pedestal Mirror**

Plano / x3 magnification, 335mm high, 150mm diameter. Colour: Nickel.  
 Ref: 3501/15N



▲ **Plastic Hand Mirror**

Reading chart on one side, flat mirror on reverse. Size: 70 x 350mm.  
 Dark Green Ref: PMDG, Red Ref: PMRD, Light Grey Ref: PMGY,  
 Blue Ref: PMBL, Brown Ref: PMBR



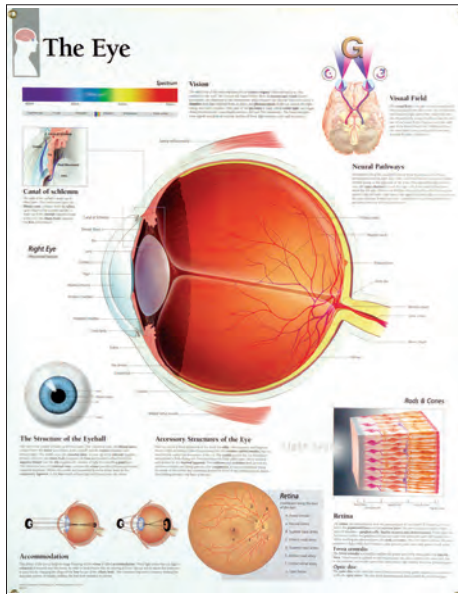
▲ **Clear Plastic Hand Mirror with Reading Chart**

Ref: 404C  
 Reading chart on one side, mirror on reverse. Size: 330 x 130mm.



▲ **Stand Mirrors**

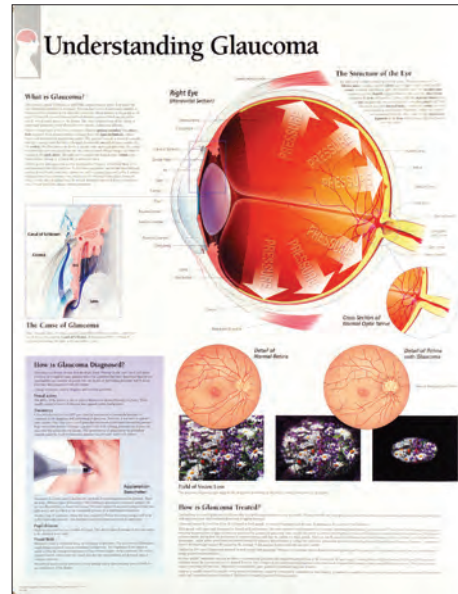
170mm Round (mirror 150mm diameter), 200mm high. Plano / x5 magnification.  
 Available in Smoke - Ref: 919S and Red - Ref: 919R



▲ The Eye

Ref: EYEP

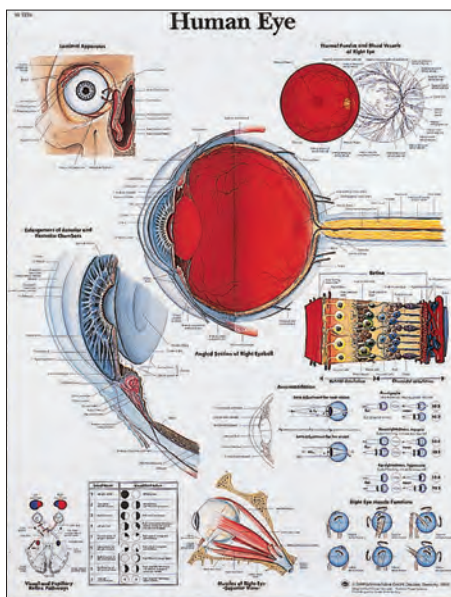
High quality gloss finish charts. Laminated. Size: 712mm x 558mm.



▲ Understanding Glaucoma

Ref: GLAUCO

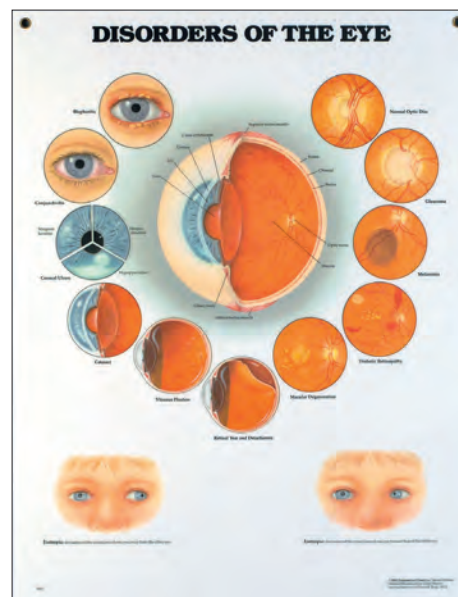
High quality gloss finish charts. Laminated. Size: 712mm x 558mm. .



▲ Human Eye

Ref: VR1226

High quality gloss finish charts. Edged with black nylon runners. Size: 66 x 50cm



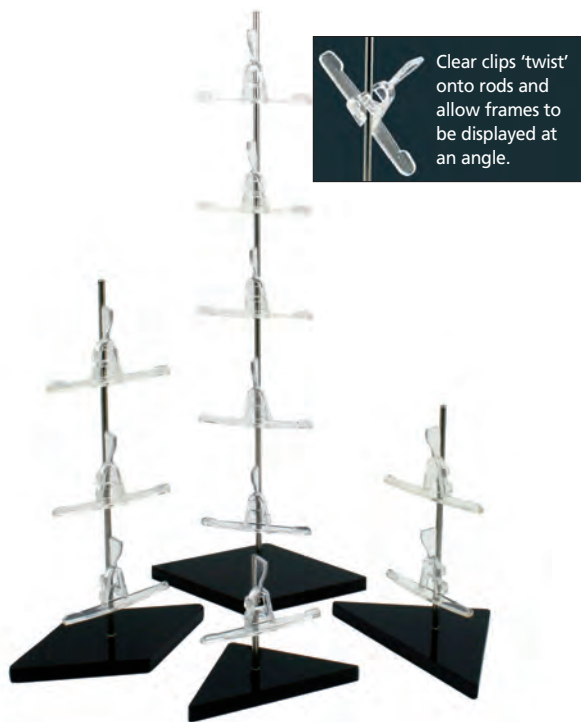
▲ Disorders of the Eye

Ref: FRADISCH

High quality gloss finish charts. Brass fittings for hanging. Laminated on both sides. Size: 66 x 50cm.



## Clipper & Twister



Clear clips 'twist' onto rods and allow frames to be displayed at an angle.

### ▲ Twister Clip Displays

Polished aluminium rods in black acrylic base. Available in four standard lengths -

- Single clip 85mm Ref: TCFD1,
- 2 clip 155mm Ref: TCFD2,
- 3 clip 230mm Ref: TCFD3,
- 5 clip 380mm Ref: TCFD5



### ▲ Cradle Clip

Single clip 85mm  
Ref: CCT



### Clipper Holder Options

#### ◀ The Nasal Ref: CHON

Small, unobtrusive clip which hold frames by the bridge only.

#### ◀ The Mobile Ref: CHOM

An adjustable alternative. Can be rotated on ratchet to display frames at unusual angles.

#### ◀ The Clip Ref: CHOC

The original holder. Can be ordered separately to add to clipper poles.

#### ◀ The Clip 2 Ref: CHOC2

Similar to 'The Clip' but is swept back to suit wrap-round style frames and sunspecs.



### ▲ Clear Clipper

Clear perspex rods. Particularly attractive finish. Can be wall or slat wall mounted. Comes with choice of fitting; either 'Clip', 'Mobile' or 'Nasal' holders (please specify). Available in three standard lengths -

- 6 clip 60cm - Ref: CC6,
- 10 clip 90cm - Ref: CC9
- 14 clip 120cm - Ref: CC12

Or special lengths to order. Ask for a quote for practice refit quantities.



### ▲ Wing Clip

Single clip 85mm  
Ref: DC1-Y4





▲ **Display Bars**

For vertical frame display. Aluminium tube available in sizes 900mm and 1200mm. M900 holds 8 pieces, M1200 holds 12 pieces.

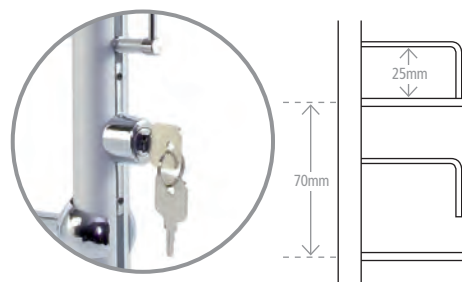
Ref: CT01-M900 and Ref: CT01-M1200



▲ **Security Display Bars**

For the secure display of valuable frames. Aluminium tube available in sizes 900mm and 1200mm. M900 holds 8 pieces, M1200 holds 12 pieces.

Ref: CT01-M900-1 and Ref: CT01-M1200-1





▲ **4 Clip Slope**

Ref: CS1

Takes four frames on clear clips, set onto 'glass effect' plastic.



▲ **6 Clip Slope**

Ref: CS2

Takes six frames on clear clips, set onto 'glass effect' plastic.



▲ **Key ring Screwdriver Stand**

Ref: KSS

20 screwdrivers included. Key ring screwdrivers are also available as a separate item Ref: KSD.



▲ **Frame Tray**

Ref: FT2

Holds 20 frames - for use under/on shelves or as drawer inserts. White plastic. W65cm x D30cm x H4cm.



▲ **Six Frame Tray (Plastic)**

Ref: FT1

For six pieces.



▲ **White Rims**

Ref: WR

White plastic. For individual demonstrators.



▲ **Crystal Rims with Handle**

Ref: CRH

Crystal plastic carrier with handle for 55mm lenses.



▲ **Empty Round Lorgnettes**

Takes lenses edged to 55mm.

Black acrylic Ref: LERB

White acrylic Ref: LER



▲ **Empty Oval Lorgnettes**

53mm eyesize.

Black acrylic Ref: LEOB

Clear acrylic Ref: LEOCL

Cream acrylic Ref: LEOCR



▲ **Magnetic Clip Display**  
 Holds 10 magna clips. Size: 31 x 24cm  
 Made of white acrylic. (supplied without clips)  
 Ref: Mag Display 2



▲ **Magnetic Tint Sample Tree**  
 Set of 12 rims Ref: Set MTST12  
 Tint samples held in rings are displayed on magnetic 'poles'. Brushed aluminium finish.

Available individually:  
 Ref: Set MTSR  
 Magnetic Sample ring for use with the tree. 55mm diameter.



▲ **Demonstration Case - Large**  
 Ref: 001-74-14  
 Supplied empty

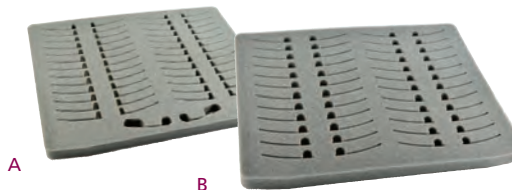


▲ **Demonstration Case Foam Inlay - Large**  
 For large demonstration case.  
 Ref: DCFIL-A, Ref: DCFIL- B, Ref: DCFIL- C

For further information on other demonstration sets, contact Telesales on 01452 510321



▲ **Demonstration Case - Small**  
 Ref: 95-74-04  
 Supplied empty



▲ **Demonstration Case Foam Inlay - Small**  
 For small demonstration case.  
 Ref: DCFIS-A, Ref: DCFIS-B



◀ **Label Printer Tape Cassettes**

Allows the text to be clearly displayed on demonstration lenses. Types of tape available:

Black on clear	9mm deep	Ref: CBC9
Black on clear	12mm deep	Ref: CBC12
Black on red	6mm deep	Ref: CBR6
Black on red	9mm deep	Ref: CBR9
Black on red	12mm deep	Ref: CBR12
Black on white	6mm deep	Ref: CBW6
Black on white	9mm deep	Ref: CBW9
Black on white	12mm deep	Ref: CBW12
Black on silver	9mm deep	Ref: CBS9
Black on blue	12mm deep	Ref: CBBU12
Black on yellow	12mm deep	Ref: CBY12



▲ **3-Compartment Rx Job Trays - Small & Large** Three compartments, easy to stack. Supplied with clear tag. Available in four colours.

	Small: W172 x L250 x D40mm	Large: W190 x L265 x D45mm
Orange	Ref: CT007SO	Ref: CT007LO
Yellow	Ref: CT007SY	Ref: CT007LY
Crystal	Ref: CT007SC	Ref: CT007LC
Blue	Ref: CT007SB	Ref: CT007LB



▲ **Extra Sturdy Laboratory/Dispensing Trays** Stacked trays interlock for secure transporting. Large tray tag slot for easy reference. 1x white tag supplied with each tray. Size: W157 x L230 x D40mm. Available in six 'organising' colours: Green Ref: WE/181, Yellow Ref: WE/182, Red Ref: WE/184, Blue Ref: WE/184A, White Ref: WE/196, Black Ref: WE/197.



▲ **Lens Storage Box/Cabinet Dividers**

Separates stock, available in six colours:

Blue Ref: WE/80, Orange Ref: WE/80A, White Ref: WE/80B, Green Ref: WE/80C, Yellow Ref: WE/80D, Red Ref: WE/80E



Light Blue  
Ref: WE/186A



Mid Blue  
Ref: WE/186



Orange  
Ref: WE/187



White  
Ref: WE/188



Light Green  
Ref: WE/189



Dark Green  
Ref: WE/189A



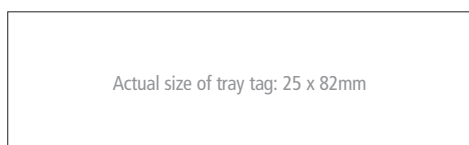
Yellow  
Ref: WE/190



Red  
Ref: WE/191

▲ **Mini Tags**

For colour coding of job trays. Can be used for daily prescriptions, Monday – Sunday. Size approximately 25mm square. Also available for use with mini tags: Velcro Adhesive-backed hook and loop fastener Ref: 800/14/24 12 mtr lengths



▲ **Additional Tray Tags**

Order as individual tags. Ref: WE/184B



▲ **Single Lens Packet**

Size: Packed x 100. Ref: NO100



▲ **Double Lens Packet with flap**

Size: 95 x 180mm Packed x 100. Ref: NO112



▲ **Foam Lens Pouch**

Size: Packed x 100. Ref: FLP003



▲ **Foam Frame Pouch**

Size: Packed x 100. Ref: FFP001



▲ **Lens Marking Ink**  
Water soluble. Does not cake. 4oz bottles. Choice of colours: Red - Ref: WE/1, Yellow - Ref: WE/2, Black - Ref: WE/27, White - Ref: WE/28.



▲ **Alcohol Dispenser**  
Ref: CT 8702  
Pump action top. 50ml capacity.



▲ **Focimeter Printer Paper**  
57mm wide x 50mm diam. Ref: PR50



▲ **Refill ink**  
Ref: LS2/LD-1



▲ **Chinagraph pencil**  
Available in Red - Ref: OS14, White - Ref: OS15, Yellow - Ref: OS40, Black - Ref: OS41



▲ **The white pen pupil marker Ref: WPP**  
Pupil Marker's acid free white dot is designed to show up distinctly in front of the background of the patients black pupil. It can also be used to mark engravings on a polarised or darkly tinted progressive lenses. Available individually, box of 3, box of 5, box of 12.



▲ **Wet Erase Chalk Marker**  
Water soluble marker. 2mm felt taper tip.  
Ref: OS38



▲ **The Eliminator Marking Ink Removal Pen**  
Removes any progressive lens marks. Acetone free. Safe on polycarbonate lenses. Instant dry, no oily residue.  
Ref: INKOFFpen



◀ **Eliminator Marking Ink Removal Liquid**  
Eliminator - the safest and easiest Marking Ink Removal liquid ever created. Now you can easily remove the toughest lens markings quickly from Polycarbonate, Trivex, High-Index and CR39 lenses without leaving an oily residue. Eliminator is the culmination of years of extensive research and testing designed to create a safe and effective way to remove progressive markings from lenses.  
4oz Ref: 99-AO4, 16oz Ref: 99-AO



▲ **The original Pentel Sign Pen**  
Water soluble marker. 2mm felt taper tip.  
Black - Ref: OS7, Red - Ref: OS38



▲ **Permanent marker**  
Nylon taper tip. Black - Ref: SL318-9, Red - Ref: SL318-2  
Available individually, box of 5, box of 10.



▲ **Norville Autoflow permanent marker**  
Ref: MarkOn Extra fine tip. Ideal for marking hydrophobic top coats. Instant drying. 1mm metal collar, black only.



▲ **RF Special permanent marker Ref: SL319-9**  
Designed to avoid beading or smudging on RF coated lenses, quick dry. 2mm nylon taper tip, black only. Available individually, box of 5, box of 10.



▲ **Rimless dot marker Ref: RM1**  
Dot through the holes of dummy lenses for spot-on accuracy. 1mm metal collar, black only.



▲ **Rimless Dot marker Ref: RM2**  
Dot through the holes of dummy lenses for spot-on accuracy. 1mm metal collar, black only.



Can be used individually or as part of the colour match system. Fade resistant, can treat over 200 pairs of lenses. Wide colour choice - see below. 4oz bottles.



**B&L G15**  
Ref: WE/342



**Jet Black**  
Ref: WE/343



**Supershield Dk Brown**  
Ref: WE/344



**AO Cosmalite**  
Ref: WE/340



**Aviator Grey**  
Ref: WE/341



**540 Brown**  
Ref: WE/347



**UV Blue 480 Filter**  
Ref: WE/348



**Therapeutic FL41**  
Ref: WE/349



**Black**  
Ref: WE/350



**Red**  
Ref: WE/352



**Yellow**  
Ref: WE/353



**Blue**  
Ref: WE/354



**Melanin**  
Ref: WE/355



**Grey XP**  
Ref: WE/356



**Brown XP**  
Ref: WE/357



**Sun Green**  
Ref: WE/358



**Deep Red**  
Ref: WE/360



**AO Tru Tone**  
Ref: WE/361



**Teal**  
Ref: WE/362



**Sun Grey**  
Ref: WE/363



**Supershield Brown**  
Ref: WE/364



**Total day**  
Ref: WE/365



**Total Night**  
Ref: WE/366



**Diamond 550**  
Ref: WE/367



**Brown**  
Ref: WE/368



**Lilac**  
Ref: WE/369



**Orange**  
Ref: WE/370



**UV Blue**  
Ref: WE/371



**Green**  
Ref: WE/372



▲ **Ver.O.glass**  
1 Litre bottle Ref: WE/120  
A special cleaner designed to remove all marks from organic glass before colouring and to provide perfect pigment distribution.



▲ **Dye Out Hand Cleaner**  
8 fl oz. Ref WE/143  
Hypo-allergenic formula removes lens dye stains from hands. Won't hurt sensitive skin. People and environment safe.



▲ **UV+ Scratch Resistant Coat**  
32 fl oz. Ref: WE/5C  
Blocks 99.5% of UV to 400nm while adding scratch resistance. Bonds permanently to lenses. Requires maintained heating to 210°F. Treats more than 400 lenses.



▲ **No-Bake Scratch Resistant Coat** 32 fl oz. Ref: WE/134  
Offers oven-cured performance without the oven. Provides effective scratch resistant coating from your dye tank. Treats lenses in 10 minutes, dry for 10 minutes. Treats more than 200 pairs of lenses



◀ **Pyrex Beakers**  
50ml - Ref: BNB-385-010K  
100ml - Ref: BNB-385-030E  
150ml - Ref: BNB-385-050V  
250ml - Ref: BNB-385-070P  
400ml - Ref: BNB-385-090J  
600ml - Ref: BNB-385-110G  
800ml - Ref: BNB-320-215S  
1000ml - Ref: BNB-385-130A



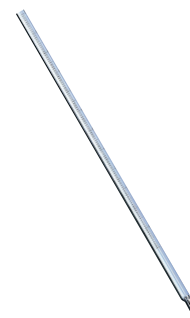
▲ **Standard lens holder**  
Ref: WE/228



▲ **UV lens holder. White**  
Ref: WE/230



▲ **Slant lens holder**  
Ref: WE/231



▲ **Thermometer**  
Ref: SPTU/54  
Dual scale, -10 to 110°, 0 to 250°



### ▲ Multi-function UV Lens Tester

Ref: 888-06

This small, simple practice-based UV demonstration unit is a must for all practices, allowing you to confirm the lens product you are supplying conforms to your requirements, offering better or complete UV protection. Lens UV testing facility. Digital readout. Red/green light quick check.



### ▲ PD Meter (The Pupilometer)

Ref: CT4113

The Pupilometer is a digital precision optical instrument used to measure distance between human pupils in the process of optometry for fitting spectacles. This device is designed in a scientific and reasonable way, intergrating technologies on mechanical hairspring orientation measurement system, optical system, ESS and microcomputer into a whole.

- Using mechanical hairspring to level at the reflecting point of human cornea to realise the consecutive measurement. It features directness of point sampling and high accuracy of orientation.
- Adopting line-shaped sensors of high definition, advanced intellectualised electronic systems and digital display which allow the testing results more visible, legible and accurate.
- LED lamp-house and design of low power consumption ensure the prolonged service life of batteries.
- It offers the +2.00m compensation for the degree of eyesight.
- The brightness of LED lamp-house is adjustable.



### ▲ Hand Held Focimeter

Ref: 529

Battery operated, fully portable. Case can be used as stand. Power range  $\pm 15.00D$ . Accommodates up to 80mm diameter lenses. Detachable frame table. Lens marking device.



### ▲ Photochromic Lens Demonstrator

Ref: 21011

Activates photochromic lenses, both uncut and glazed. Mains operated.



### ▲ Polarising Axis Verifier Gauge

Ref: PAVG

ISO BSI Standard allow  $+5^\circ$  as the glazing axis tolerance for polarising lenses, that is the axis of polarisation rather than the glazed cylinder axis. Paddle also available separately.



### ▲ Strain Tester

Ref: WE79

Hand held.

### Magnon Spares



#### ▲ Ink cartridge marker unit.

Ref: LM770/0

Magnon code: 30281-3230



#### ▲ Ink cartridge unit

Ref: LM770/08

Magnon code: 30281-3261



#### ▲ Rubber top Nosepiece

Ref: LM770/07

Magnon code: 30281-M3237





#### ◀ TOPCON LM-8 Focimeter

Ref: MC/057

Available as:

LM-8 - Crossline target.

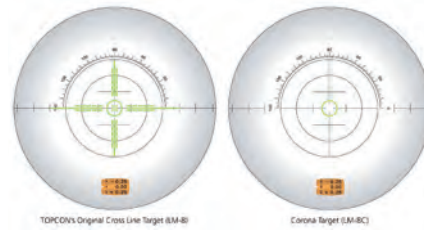
LM-8C - Corona target.

An optional prism compensator is also available to measure from 5 prism dioptres to 14 prism dioptres in 1 dioptre steps.

Create barcode

Battery operated

Prism compensator - Ref: MC/057A Pr / LM-S1/8/8C  
A/C Adaptor



#### ◀ Spares for Topcon LM-8 Focimeter

- 1 Black ink Ref: LS2/LD
- 2 Red ink Ref: TCR
- 3 Ink pad Ref: WE/247
- 5 Eyepiece rubber  
Ref: 098750
- 6 Lens stop Ref: 31381
- 7 LM-8 marking unit (set of 3)  
Ref: WE/246A



### ▲ Maga S Frame Heater

Ref: A200S

Frame heater with quiet operation and powerful heating properties.

- Choice of two electronically controlled temperature settings:
  - 65°C to 90°C for acetate frames
  - 130°C to 170°C for Optyl frames or quick heating
- Prevents burning the frame
- Spot heating for nose bridge or temples
- Cold air option
- Mounting platform to position frame with both sides in contact with hot air flow
- Dimensions: D 315 x W 190 x H 215 mm (D 12.4 x W 7.5 x H 8.5 in)
- Weight: 2.60 Kg (5.73 lbs)
- Voltage : 240V/50Hz
- Power: 5.5 A



### ▲ Norville Autoflow

Ref: NH 320-F

Power and heat buttons. Adjustable heat settings. 600W. With additional funnel cup.



### ▲ CD-4800 Ultrasonic Cleaner

Ref: CD4800

Hard plastic body, Stainless steel tank, see-through lid, cooling fan.

- Moulded work basket
- Timer range: 0-99 mins
- Working capacity: 1.4 litres
- Operating frequency: 42 KHz
- Overall: 230 x 180 x 160mm high
- Weight: 1.75Kgs



### ◀ NR24 Cleaning Solution

Ref: WE/212

For use with all ultrasonic cleaners. 1 litre bottle.



### ▲ Ventilette 3 Ref: 286122

Basic model. On/off, Hot/cold. 230V, 450W

### Ventilette 3 Spare Parts



#### ◀ Rocker Switch, Interruptor

Black Ref: 2861 30  
Red Ref: 2861 31

#### ◀ Heating Element

Ref: 2861 52  
230 volts. For order no. 2861 22

#### ◀ Plastic Beaker

Ref: 2861 60  
With temperature and spot heating shutter.  
For order no. 2861 22

#### ◀ Switch

Ref: 2867 30  
For order no. 2867 / 2869 22




#### ◀ Carbon Brushes

Ref: 2861 96  
Set of 2

All screws, nuts, washers and bushes are supplied in packs of 100

CODE	LENGTH	DIAMETER	COLOUR	HEAD
------	--------	----------	--------	------

**Pad Screws**

 ◀ <b>NOC002</b>	3.8mm	0.8mm	Silver	Slot
 ◀ <b>NOF186G</b>	3.8mm	0.8mm	Gold	Slot
 ◀ <b>NOF186S</b>	3.8mm	0.8mm	Silver	Slot

**Temple / Glazing / Pad Screws**

 ◀ <b>NOF184G</b>	3.0mm	1.0mm	Gold	Slot
 ◀ <b>NOF184S</b>	3.0mm	1.0mm	Silver	Slot

**Temple / Glazing Screws**

 ◀ <b>NOCSA</b>	4.5mm	1.2mm	Silver	Slot
 ◀ <b>NOC007</b>	3.0mm	1.2mm	Silver	Slot
 ◀ <b>NOC008</b>	2.8mm	1.4mm	Silver	Slot
 ◀ <b>NOC009</b>	3.0mm	1.2mm	Silver	Slot
 ◀ <b>NOC013</b>	3.0mm	1.2mm	Silver	Slot
 ◀ <b>NOC014</b>	2.9mm	1.2mm	Silver	Slot
 ◀ <b>NOC016</b>	3.7mm	1.0mm	Gold	Slot
 ◀ <b>NOC017</b>	3.3mm	1.2mm	Silver	Slot
 ◀ <b>NOC018</b>	4.8mm	1.2mm	Silver	Slot
 ◀ <b>NOC021</b>	3.3mm	1.2mm	Silver	Slot
 ◀ <b>NOC022</b>	2.4mm	1.2mm	Silver	Slot
 ◀ <b>NOC024</b>	3.3mm	1.2mm	Silver	Slot
 ◀ <b>NOC025</b>	3.3mm	1.2mm	Silver	Slot
 ◀ <b>NOC026</b>	2.9mm	1.2mm	Silver	Slot
 ◀ <b>NOC027</b>	4.7mm	1.2mm	Silver	Slot
 ◀ <b>NOC028</b>	4.2mm	1.2mm	Silver	Slot
 ◀ <b>NOC030</b>	2.9mm	1.2mm	Silver	Slot
 ◀ <b>NOC032</b>	2.7mm	1.2mm	Silver	Slot
 ◀ <b>NOC033</b>	3.3mm	1.2mm	Gold	Slot
 ◀ <b>NOC034</b>	3.8mm	1.2mm	Silver	Slot
 ◀ <b>NOC036</b>	3.7mm	1.2mm	Silver	Slot
 ◀ <b>NOF157</b>	5.1mm	1.2mm	Silver	Slot
 ◀ <b>NOF158</b>	4.3mm	1.4mm	Silver	Slot
◀ <b>NOF159</b>	4.4mm	1.4mm	Silver	Slot
◀ <b>NOF173</b>	4.8mm	1.2mm	Silver	Slot
◀ <b>NOF175</b>	3.1mm	1.2mm	Silver	Slot

















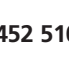

CODE	LENGTH	DIAMETER	COLOUR	HEAD
------	--------	----------	--------	------

 ◀ <b>NOF176</b>	3.3mm	1.4mm	Silver	Slot
 ◀ <b>NOF180G</b>	3.5mm	1.2mm	Gold	Slot
 ◀ <b>NOF180S</b>	3.5mm	1.2mm	Silver	Slot
 ◀ <b>NOF181</b>	2.9mm	1.2mm	Gold	Slot
 ◀ <b>NOF182G</b>	3.7mm	1.2mm	Silver	Slot
 ◀ <b>NOF182S</b>	3.7mm	1.2mm	Gold	Slot
 ◀ <b>NOF188G</b>	2.8mm	1.2mm	Gold	Slot
 ◀ <b>NOF188S</b>	2.8mm	1.2mm	Silver	Slot




**Rimless Glazing Screws**

 ◀ <b>RG01</b>	14mm	1.2mm	Gold	Slot
 ◀ <b>RG08</b>	14mm	1.4mm	Gold	Slot
 ◀ <b>RS01</b>	14mm	1.2mm	Silver	Slot
 ◀ <b>RS08</b>	14mm	1.4mm	Silver	Slot

**Nuts & Washers**

 ◀ <b>RG02</b> Open Nut	1.2mm	Gold
 ◀ <b>RS02</b> Open Nut	1.2mm	Silver
 ◀ <b>RG09</b> Open Nut	1.4mm	Gold
 ◀ <b>RS09</b> Open Nut	1.4mm	Silver
 ◀ <b>RG06</b> Dome Nut	1.2mm	Gold
 ◀ <b>RS06</b> Dome Nut	1.2mm	Silver
 ◀ <b>RG11</b> Dome Nut	1.4mm	Gold
 ◀ <b>RS11</b> Dome Nut	1.4mm	Silver
 ◀ <b>RG03</b> Washer	1.2mm	Gold
 ◀ <b>RS03</b> Washer	1.2mm	Silver
 ◀ <b>RG10</b> Washer	1.4mm	Gold
 ◀ <b>RS10</b> Washer	1.4mm	Silver
 ◀ <b>RG07</b> Flat Plastic Washer	1.2mm	
 ◀ <b>RG04</b> Bush Washer	1.2mm	
 ◀ <b>RGN02</b> Grip Nut	1.2mm	Gold
 ◀ <b>RGN01</b> Grip Nut	1.2mm	Silver
 ◀ <b>RGN04</b> Grip Nut	1.4mm	Gold
 ◀ <b>RGN03</b> Grip Nut	1.4mm	Silver

CODE	SIZE
------	------

 ◀ <b>RGN05</b>	Plastic Grip Nut	1.2mm
 ◀ <b>RGN06</b>	Plastic Grip Nut	1.4mm
 ◀ <b>RGN07</b>	Plastic Grip Nut Washer	1.2mm
 ◀ <b>RGN08</b>	Plastic Grip Nut Washer	1.4mm
 ◀ <b>SGP</b>	Superlite Glazing Plugs	1.4 or 1.8mm



**▲ Screw Set**

Ref: TSS  
Unique pressure locking lid to avoid spills. 50 slot head screws each of 10 popular types. Diameter 90mm



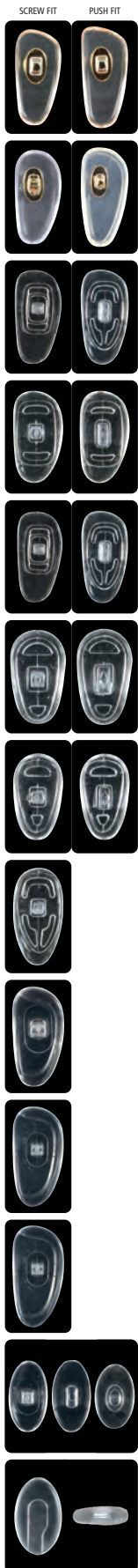
**▲ Empty Dial Boxes**

Ref: SSB 90mm Diameter.  
Ref: LSB 110mm Diameter.

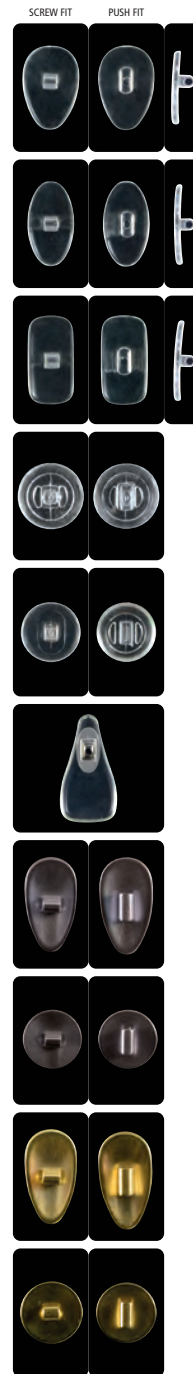


**▲ Pad Set**

Push on Ref: TSP-P, Screw on Ref: TSP-S  
Unique pressure locking lid to avoid spills. 10 pairs each of 5 pad types. Diameter 110mm



- ◀ **Acetate - D shape Metal centre**  
17mm Screw fit. 5 prs. **NP001**  
18mm Screw fit. 5 prs. **NP002**
- ◀ **Silicone - D shape Metal centre**  
17mm Screw fit. 5 prs. **NP003**  
19mm Screw fit. 5 prs. **NP004**
- ◀ **Silicone - D shape Plastic centre**  
18mm Screw fit. 5 pairs. **NP005**  
18mm Push fit. 5 pairs. **NP006**
- ◀ **Silicone - D shape Plastic centre**  
15mm Screw fit. 5 pairs. **NP009**  
15mm Push fit. 5 pairs. **NP010**
- ◀ **Silicone N - D shape Plastic centre**  
17mm Screw fit. 5 pairs. **NP014**  
17mm Push fit. 5 pairs. **NP015**
- ◀ **Silicone - Symmetrical Plastic centre**  
11mm Screw fit. 5 pairs. **NP018**  
11mm Push fit. 5 pairs. **NP019**
- ◀ **Silicone - Symmetrical Plastic centre**  
13mm Screw fit. 5 pairs. **NP016**  
13mm Push fit. 5 pairs. **NP017**
- ◀ **Silicone - Symmetrical Plastic centre**  
17mm Screw fit. 5 pairs. **NP030**
- ◀ **Flexible PVC - D shape Plastic centre**  
15mm Screw fit. 5 pairs. **NP032**
- ◀ **Flexible PVC - D shape Plastic centre**  
17mm Screw fit. 5 pairs. **NP033**
- ◀ **Flexible PVC - D shape Plastic centre**  
19mm Screw fit. 5 pairs. **NP034**
- ◀ **Flexible PVC - Oval Plastic centre**  
13mm Screw fit. 5 pairs. **NP038**  
13mm Push fit. 5 pairs. **NP039**  
13mm Button fit. 5 pairs. **NP042**
- ◀ **Slide-on Arm Cover Pads Plastic centre**  
9mm Screw fit. 5 pairs. **NP043**



- ◀ **Super Slim - Symmetrical Plastic centre**  
12mm Screw fit. 5 pairs. **NP044**  
12mm Push fit. 5 pairs. **NP045**
- ◀ **Super Slim - Oval Plastic centre**  
13mm Screw fit. 5 pairs. **NP046**  
13mm Push fit. 5 pairs. **NP047**
- ◀ **Super Slim - Rectangle Plastic centre**  
14mm Screw fit. 5 pairs. **NP048**  
14mm Push fit. 5 pairs. **NP049**
- ◀ **Silicone - Round Plastic centre**  
9mm Screw fit. 5 pairs. **NP011**  
9mm Push fit. 5 pairs. **NP012**
- ◀ **Flexible PVC - Round Plastic centre**  
9mm Screw fit. 5 pairs. **NP040**  
9mm Push fit. 5 pairs. **NP041**
- ◀ **Acetate Spade Screw fit only.**  
15 x 8mm. **NP650** Gold.  
15 x 8mm. **NP651** Silver.
- ◀ **Titanium Nose Pads - Symmetrical - 12mm**  
Screw fit. Silver. 1 pair. **NP020**  
Push fit. Silver. 1 pair. **NP021**
- ◀ **Titanium Nose Pads - Round - 9mm**  
Screw fit. Silver. 1 pair. **NP022**  
Push fit. Silver. 1 pair. **NP023**
- ◀ **Titanium Nose Pads - Symmetrical - 12mm**  
Screw fit. Gold. 1 pair. **NP024**  
Push fit. Gold. 1 pair. **NP025**
- ◀ **Titanium Nose Pads - Round - 9mm**  
Screw fit. Gold. 1 pair. **NP026**  
Push fit. Gold. 1 pair. **NP027**



◀ **AirTec Cushion Pads in Silicone**  
Polycarb insert. 14.5mm Screw fit. 5 pairs. **NP60889**



◀ **AirTec Cushion Pads in Silicone**  
Polycarb insert 14.5mm Push fit. 5 pairs. **NP60961**



◀ **AirTec Cushion Pads in Silicone**  
All pure silicone, no insert 11mm Slide fit. 5 pairs. **NP61130**



◀ **PVC Saddle Flexibridge**  
Small Metal centre. 30mm Screw fit. Pack of 3. **SB015**



◀ **PVC Saddle Flexibridge**  
Large Metal centre. 36mm Screw fit. Pack of 3. **SB025**



◀ **Silicone Saddle Flexibridge**  
Small Plastic centre. 23mm Screw fit. Pack of 3. **SB035**  
23mm Push fit. Pack of 3. **SB03P**



◀ **Silicone Saddle Flexibridge**  
Large Plastic centre. 30mm Screw fit. Pack of 3. **SB045**  
30mm Push fit. Pack of 3. **SB04P**



◀ **Adjustable Silicon Bridge**  
Screw fit. Gold. Pack of 3. **AB01**



◀ **Height Adjustable Nose Pads - Symmetrical**  
Screw fit. Plastic centre. Three pairs. 15mm **NP050** 18mm **NP051**



◀ **Norville Sticky Silicone Pads**  
Gives the extra grip and comfort of silicone for plastic frames. Supplied in packs of three pairs. 20mm  
Ref: **NSSP**



▲ **Head width adjustment rings**  
Restore a firm head width fit. Simple - Quick - Effective. For worn, loose fitting frames, metal or acetate, use to restore a narrower head width. Ref: **HWA**

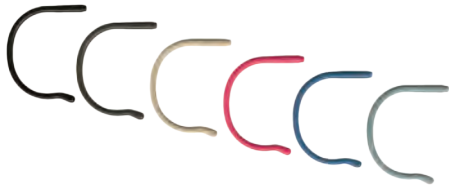


▲ **Slim Fit Temple Covers**  
An unobtrusive comfort accessory for use on metal sides. Supplied in packs of one pair. Ref: **SFTC**



▲ **Heat Shrink Tube**  
1.2m length pack per colour. Set of all colours. Clear Ref: **SS01**, Black Ref: **SS02**, White Ref: **SS03**, Red Ref: **SS04**, Yellow Ref: **SS05**, Blue Ref: **SS06**.

## Silicone Curl Ends



Adult:  
 Black - Ref: CE01  
 Brown - Ref: CE02  
 Beige - Ref: CE03  
 Red - Ref: CE04  
 Blue - Ref: CE05  
 Grey - Ref: CE06



Kids:  
 Black - Ref: CE07  
 Blue - Ref: CE08  
 Brown - Ref: CE09  
 Grey - Ref: CE10  
 Red - Ref: CE11

## Silicone Temple Tip

### Replacement for acetate tips - non-slip silicone

#### Regular tip replacements - Plastic



CORE SIZE	COLOUR	LENGTH	REF	TIP SHAPE	
1.2mm	Crystal	65mm	AT1	Oval	5 pairs
1.2mm	Black	65mm	AT2		
1.2mm	Brown	65mm	AT3		

#### Ultra Thin



1.2mm	Black	65-70mm	UT1	Oval	3 pairs
1.2mm	Brown	65-70mm	UT2		
1.2mm	Clear	65-70mm	UT3		
1.2mm	Tortoise	65-70mm	UT4		

#### Non-slip Silicone

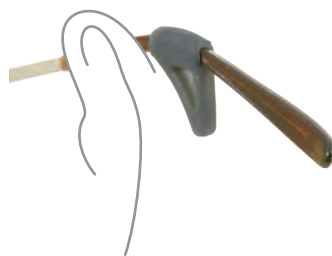


1.2mm	Crystal	65mm	ST1	Spade	5 pairs
1.2mm	Brown	65mm	ST2	Spade	
1.2mm	Black	70mm	ST3	Oval	

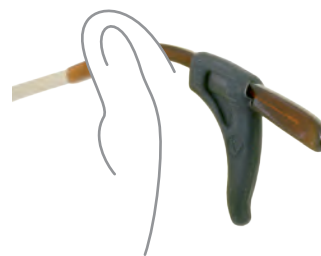
#### Temple Tip Extenders



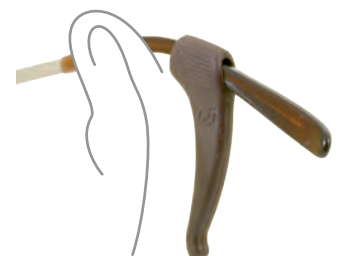
1.4mm	Black/Brown/Tortoise	65mm (=70mm)	19/301	Spade	7 pairs
1.4mm	Black/Brown/Tortoise	70mm (=75mm)	19/302	Spade	
1.4mm	Black/Brown/Tortoise	75mm (=80mm)	19/303	Spade	
1.4mm	Black/Brown/Tortoise	80mm (=85mm)	19/314	Spade	
1.6mm	Black/Brown/Tortoise	65mm (=70mm)	19/304	Spade	7 pairs
1.6mm	Black/Brown/Tortoise	70mm (=75mm)	19/305	Spade	
1.6mm	Black/Brown/Tortoise	75mm (=80mm)	19/306	Spade	
1.6mm	Black/Brown/Tortoise	80mm (=85mm)	19/315	Spade	
1.8mm	Black/Brown/Tortoise	65mm (=70mm)	19/307	Spade	7 pairs
1.8mm	Black/Brown/Tortoise	70mm (=75mm)	19/308	Spade	
1.8mm	Black/Brown/Tortoise	75mm (=80mm)	19/309	Spade	
1.8mm	Black/Brown/Tortoise	80mm (=85mm)	19/316	Spade	



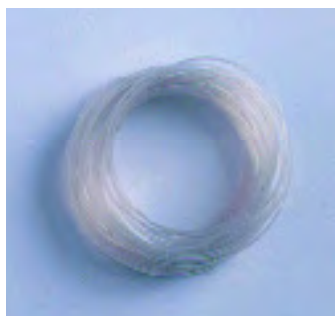
▲ Ear Locks - Mini 17mm  
 Ref: Minilock  
 For children and imperceptible fittings.



▲ Ear Locks - Medium 26mm  
 Ref: Earlock  
 For everyday frame sizes.



▲ Ear Locks - Large 35mm  
 Ref: Megalock  
 For industrial safety specs and sports eyewear.



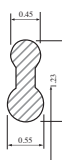
▲ **Clear Round Liner**

Ref: WE/1235  
4 metres, 0.5mm dia



▲ **Clear Figure 8 Liner**

Ref: WE/1242  
'Figure 8' liner. 4 metres



▲ **Regular 'V' Liner**

Ref: WE/1250  
4 metres, 1.40 x 0.20mm



▲ **Supra cord**

Ref: WE/223 - 10 metres  
Ref: WE/223B - 100 metre reel  
Diameter: 0.5mm.



▲ **Cyrex Invisible Washers**

Ref: CYR - Pack of 5 coils.



▲ **Supra Mounting Tool**

Ref: OU-110  
A simple hand tool to ease the fitting of edged grooved lenses into supra frames.



▲ **Supra Mouter**

Ref: DI-102  
For an easy and fast introduction of cord (from 0.45 - 0.55mm)

**Plating Supplies**



**Plating Pens**

Copper - Ref: WE/68  
Nickel - Ref: WE/69  
Black Nickel - Ref: WE/70  
Pink Gold - Ref: WE/71  
Absorbent (Degreaser) - Ref: WE/72  
Chrome - Ref: WE/73  
18 colour Gold - Ref: WE/75  
Silver - Ref: WE/76  
Light Gold - Ref: AP-225

Also available:  
Leads for plating machine Ref: WE/67B



▲ **Lacquer**

Frame repair paints for repair and decoration of metal frames. Size: 12ml  
Ref: LA-226/A - Black, Ref: LA-266/AM - Matt Black  
Ref: LA-226/B - Dark Brown, Ref: LA-226/C - Light Brown  
Ref: LA-226/CR - Chrome, Ref: LA-226/O - Gold



▲ **Ultra Clarity Care Pack**

Advanced formula offers improved cleaning to all lenses.  
 30ml bottle: box of 60 - Ref: UC/30  
 180ml bottle: Single bottle - Ref: UC/180  
 180ml bottle: box of 5 bottles - Ref: UC/180/5  
 180ml bottle: box of 10 bottles - Ref: UC/180/10  
 180ml bottle: box of 24 bottles - Ref: UC/180/24



▲ **Solution 30 Lens Cleaner**

Ref: WE/185 150ml can, box of 12  
 Ref: WE/185B 400ml can, box of 12



▲ **Microfibre Cloths, Practice Size**

Ref: MFC  
 40 x 40cm, Royal Blue.



▲ **Air Duster Spray**

Ref: PCP101  
 Air duster for removing dust and debris from electrical and electronic equipment including keyboards, printers and PCBs.



▲ **Foam Cleaner Spray**

Ref: PPC100  
 Foam cleaner to remove dirt, grease and grime from all hard surfaces. Suitable for use on VDUs, televisions, photocopiers and all types of office and IT equipment. It can also be used as a stain remover for carpets and other soft furnishings.



▲ **Selvyt Cloths**

Ref: SC/A 25 x 25cm, Ref: SC/B 35 x 35cm  
 Ref: SC/C 43 x 35cm, Ref: SC/D 53 x 43cm  
 Ref: SC/E 61 x 53cm





▲ **Loctite Adhesives**

**Ref: Loctite 222** 10ml  
Holds screws securely from working loose while still allowing removal by screwdriver.

**Ref: Loctite 243** 10ml  
A grade higher than 222 for slightly stronger screw retention.

**Ref: Loctite 401** 3g  
For bonding lenses into Polymil frames.

**Ref: Loctite 406**  
For bonding lenses into Polymil frames.

**Ref: Loctite 454** 20g  
For bonding Polymil rubbers onto frames.



▲ **Needle Variety Kit**

**Ref: 398116**  
28 assorted needles. Dispensing tips are colour coded to indicate the inner diameter of the needle. They can be attached to most LOCTITE adhesive bottles and syringes to improve control.



▲ **Hypo-tube cement**

**Ref: WE/232**  
Liquid lens liner. 10ml tube.



▲ **Loctite 290**  
**Ref: Loctite 290**  
Recommended for locking pre-assembled fasteners, e.g. instrument screws, electrical connectors, etc. 10ml bottle.



▲ **Loctite 460**  
**Ref: Loctite 460**  
Instant superglue. Will not damage acetate or plastic lenses. 20g bottle.



▲ **Loctite 480**  
**Ref: Loctite 480**  
Black Instant superglue. Will not damage acetate or plastic lenses. 20g bottle.



▲ **Loctite 3491**  
**Ref: Loctite 3491**  
Light cure adhesive. 25ml bottle.



▲ **Loctite Glue Remover**  
**Ref: Glue Remover**  
Removes super glue and many other glues from badly bonded objects and accidentally bonded fingers. 5g tube.



▲ **WD40 Lubricating/Easing Oil**  
**Ref: G/Stock/1**  
Highly penetrating action allows rapid release of seized or corroded parts. Leaves a lubricating film which aids re-assembly and prevents further corrosion. 450ml can.



▲ **Screw Loosening Fluid**  
**Ref: SLF**  
Penetrating and lubricating fluid in handy syringe. 6cc.



▲ **Pin Point Oiler**  
**Ref: PPO**  
Pin point, one drop at a time oiler. Great for spring or standard hinges.



### ▲ Butane Gas Refill

Ref: WE/95

Butane gas to refill soldering irons, lighters, igniters and glue guns and other portable gas powered appliances.



### ▲ Miniflam Soldering Spares Oxygen canister:

Ref: WE/96

### Gas canister:

Ref: WE/98



### ▲ Replacement Needles

(sold as pairs)

0.6mm Ref: WE/207,

0.8mm Ref: WE/208,

1.0mm Ref: WE/209,

1.2mm Ref: WE/210



### ▲ Gas Torch

Ref: WE/225

Instant ignition. Two hours burn time. Safety catch. 13000C flame. Refillable. Pallarium Solder: White Ref: WE/92 Nickel, chrome or silver Gold Ref: WE/93 (gold colour frames only).



### ▲ Push-on pad Removal Tweezer

Ref: PRT

For the easy removal of push-on pads.



### ▲ Self-closing Fine Tip Tweezer

Ref: SCFTT

Delicate point and sturdy stainless steel spring action holds the smallest screws securely. 16cm long



### ▲ Duratool Needle File Set

Ref: 1375936

Supplied in a fitted vinyl wallet, set consists of 12 Swiss pattern needle files: Round, Square, Triangle, Half Round, Flat/warding, Knife, Hand, Oval, Barrette, Round Edge, Slitting and Pippin.



### ▲ Pin Tong

Ref: PT4

Holds small drills, burrs, wires and miniature tools. Capacity: 0-1/8" (3.2mm). Rotating head, 2 Double end collets, Nickel plated body. 9.5cm long.



### ▲ Mini Screw Extractor (wide jaw) Ref: ORB-OT-1806

Broken screw extractor



### ▲ Mini Screw Extractor (narrow jaw) Ref: ORB-OT-1807

Broken screw extractor



### ▲ Screw Trimmer & Miller

Ref: T50

Cuts excess off screw ends and when finished with the hand miller provided leaves a smooth result. An essential tool for rimless glazing.



▲ Eyewire Punch    ▲ Driver Slot










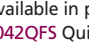
▲ **SHOOTOUT Frame Repair Multi-tool Kit**

Ref: 2042

The tool that saves you time: punches out hinge and eyewire screws, replaces the hinge screw with a QuickFix rivet, re-establishes a driver slot in a damaged screw head or peens the screw end to prevent loose and lost screws. The Shootout arms you with the most power available in a hand tool. The patented lever mechanism takes a gentle squeeze transforming it into controlled pressure to reduce damage to the barrel when ejecting broken screws.



**SHOOTOUT Replacement Components:**

-  Ref: 2042A Anvil 2.7mm Hollow
-  Ref: 2042AN Anvil Narrow, 2.0mm Hollow
-  Ref: 2042AS Solid Anvil
-  Ref: 2042AW Anvil Wide, 3.0mm Hollow
-  Ref: 2042EA Short Anvil for Eyewire Punch
-  Ref: 2042EP Eyewire Screw Ejector
-  Ref: 2042P Hinge Screw Ejector
-  Ref: 2042PC Cupped Point
-  Ref: 2042PF Flaring Point
-  Ref: 2042PS Slotting Point

◀ **QuickFix Frame Rivets**

Using the Shootout you can now rivet frame temples needing repair.

Available in packs of 100

- 2042QFS QuickFix rivet 'silver', 2042QFG QuickFix rivet 'gold', 2042QFM QuickFix rivet 'gunmetal'

◀ **Spring Hinge Plier Kit**

Ref: GP2018

At last here is an effective tool for assembling spring hinge frames!

This easy to use tool set allows you to extend the spring hinge barrel and grab it gently but securely. By extending the barrel you can align the temple with the front and easily insert the hinge screw. With a little practice you can single-handedly assemble those frustrating spring hinge frames in seconds.



◀ **Replacement lever plate**

Ref: 2018L

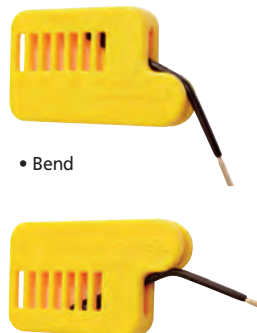
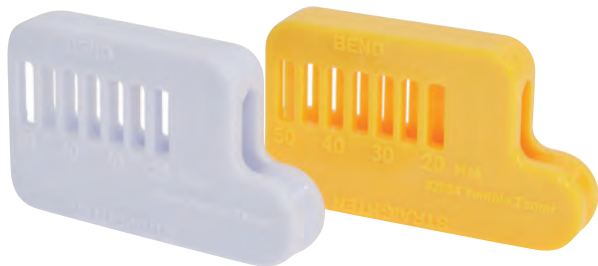
Replacement plate for the spring hinge plier kit.



◀ **The Temple Tamer**

Ref: 2084/2

Be kind to your fingers when adjusting an ear piece or changing temple tips by letting the Temple Tamer take the heat and do the work. Also great for replacing temple tips as the Temple Tamer makes it easy to straighten an ear piece, replace the temple tip and curve it back into position. Pack of two, one yellow and one white.



• Bend

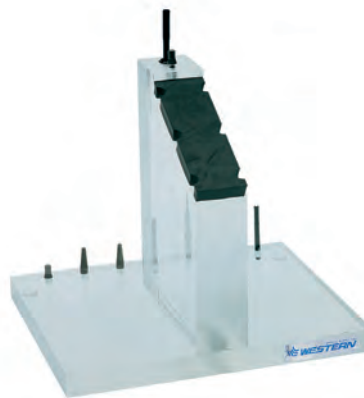
• Straighten



### ▲ Eyewire Curving Press

Ref: 7080

The ideal way to perfectly mate the curve of the eyewire to the base curve of the lens bevel. The ECP presses the curves simultaneously in the same place on the top and bottom of the eyewire. Place the eyewire between the matching 6 or 9 base curved blocks and screw closed. Tighten less for other variations in base curves. The ECP is also used to narrow the bridge for a better fit and to reduce the frame DBL. Size: 76mm x 190.5mm x 82.5mm.



### ▲ Bench Anvil Kit

Ref: 2101

Provides an angled, comfortable surface on which to place a frame when inserting eyewire, hinge screws or making general repairs. Stop hunching over a rubber bench block and begin working comfortably from your tabletop. The 'third hand' feature of the Bench Anvil includes three nut wrenches, one Phillips/flat screwdriver blade, riveting and cupping points, and solid anvil. 152.5mm x 127mm x 127mm.



### ▲ Rubber Guard Bench Block

Ref: 2100

Rubber guard protects eyewear and counter tops from damage while making frame adjustments. Screws provided for mounting. 76mm long.



### ▲ Rimless Hole Gauge

Ref: WE/261

Gauge for quick and accurate measuring of the holes for rimless glazing. Features 20 diameters from 0.6 mm up to 2.2 mm. Accuracy of 0.01 mm. Precision tool with 10 stainless steel gauge pins. An absolute must for every workshop processing rimless.



### ▲ File Guard

Ref: LI-320

Protects frame when filing.



#### ▲ Magnetic Tool Rack

Ref: MTR

Screws to a wall or the back of a work bench for quick, easy tool storage. 50cm long (tools not included).



#### ▲ Acrylic Tool Rack

Ref: 2176

Get organised with our functional and attractive counter top rack. Holds pliers, drivers, files, rules, lens clock and eight vials of screws, blades, etc. Clear acrylic. 28cm w x 15cm h x 15cm d. (tools not included).



#### ◀ Tool Stand - Round

Ref: CT6208

Round plastic tool stand to hold pliers, screwdrivers, etc. (tools not included)



#### ▲ Plier Rack

Ref: TS3

Made of acrylic with aluminium cross members. (tools not included)



#### ▲ Wood Tool Rack

Ref: TS5

Rack for pliers and varied tools. Varnished wood. Width 210mm. (tools not included)



#### ▲ Metal Tool Rack

Ref: TS6

Neat and simple stand in stainless steel. (tools not included)



▲ **Swarf Removal Tool** Ref: 2088

Unique tool for removing the residue resulting from edging polycarb and Trivex lenses. Curved edges help keep the scrapping blade balanced on the edge of the lens. Fine, squared tips for cleaning out the groove of a nylon cord rimless.



▲ **Lens Harpoon** Ref: 2086

Use when deburring, smoothing or tapering a hole in rimless mounted lenses to prevent chipping. Diamond-tipped conical point mounted in a carbon steel nickel plated handle.



▲ **Screw Finishing Tool** Ref: 2087

Rounds off the ends of cut screws and cut temples. Made of hardened carbide steel permanently mounted in a carbon steel nickel-plated handle. Maximum diameter 1.6mm.



▲ **Rimless Tube Refresher** Ref: 2085

A handy tool for reopening the compression rimless tube to make inserting the post easier.



▲ **Universal Nut Grabber (Guild)** Ref: 5070

This is the driver you can't live without! As the size and shape of locknuts proliferates, so does your collection of nut drivers. The expandable jaw of this driver grips any size or shape nut. Finished in solid, all-metal construction (length 102mm).



▲ **Universal Nut Grabber (Regular)** Ref: 5075

The expandable jaw of this driver grips any size or shape nut. Injection moulded plastic (length 107mm).



▲ **Multi** Ref: SM6

Three different sized standard blades and one cross head blade. (Spare blades are available as a complete set of four Ref: TU130/B4 Price: £4.00)



▲ **The Stealth** Ref: STEALTH

The most comfortable screwdriver ever! High power magnet holds the replaceable blade. Head swivels to eliminate wrist fatigue. (Spare blade Ref: 2090)



▲ **4x4 Driver** Ref: 5060

Delivers tremendous torque and stores its own supply of blades in the handle. Easy to grip heavy-duty body with removable ball-bearing cap. Four blades included: flat/flat (2), Phillips, and fine tip. 127mm long.



▲ **Prestige** Ref: SP8

Heavyweight with ball bearing palm grip. One extra blade in handle for larger screw heads. (Blades available in 1.5 Ref: TU875/15 or 2.0mm Ref: TU875/20)



▲ **EZ Grip Driver**

Mix 'n' Match - your choice of coloured handle with your choice of blade. Set of six Ref: 2360. Screwdriver - blades: Flat/Flat, Phillips x2, Phillips/Flat, Nutdriver - Hex Wrench, Star Nut Small, Star Nut Large Handle colour - black Ref: 2361, blue Ref: 2362, Green Ref: 2363, red Ref: 2364, white Ref: 2365, yellow Ref: 2366.



#### ▲ Trublue Aluminium Screwdriver

Indestructible and comfortable. The industry's standard driver with a new attractive blue protective finish. Rotating cap has flat spot to prevent the driver from rolling. The blade is held in place by a steel snap ring. 108 mm long.

TruBlue Standard Screwdriver Ref: 2300

TruBlue Fine Flat Tip Screwdriver Ref: 2300FT

TruBlue Standard Hex Nut Driver Ref: 2300H

TruBlue Phillips Screwdriver Ref: 2300P

TruBlue Handle Only Ref: 2305

TruBlue Driver Set (All 8 drivers listed) Ref: 2301



#### ▲ Ball Power Driver Ref: 5050

Stationary cap rotates on ball bearings yielding a smooth comfortable feel. A high power magnet holds the blade securely in place. 113mm long.



#### ▲ SU-8 Pick Up Screwdriver

Ref: TO-747

Prehensile clamping jaws hold 2mm flat blade.



#### ▲ Driveshaft Reversible

Comfortable and attractive. Made of non-wearing nylon with a rotating cap. 108mm long. Reversible blade.

Driveshaft Standard Screwdriver Ref: 2048

Driveshaft Fine Flat Tip Screwdriver Ref: 2046FT

Driveshaft Phillips/Flat Screwdriver Ref: 2046PF

Driveshaft Screw Extractor Ref: 2046SE

Driveshaft Set (All 8 drivers listed) Ref: 2046

Driveshaft Steel Snap Ring Ref: 2049R



#### ▲ Wooden Handle Screwdriver Ref: TO-114

Large wooden handle. Comes with two detachable blades.



#### ▲ Get-A-Grip Driver Cushions Set

Ref: 2047

Get a firmer and more comfortable grip on your driver while relieving stress on your fingers. Multiple colours for fast tool identification (set of five). 39mm length, 7mm centre diameter.



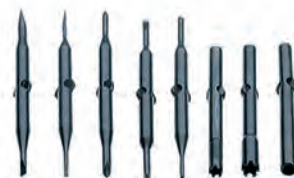
#### ▲ Pocket Clip Reversible

This useful design allows you to keep track of your driver by comfortably carrying it with you. Injection moulded of super sturdy non-wearing nylon with rotating cap. The removable hardened German steel blade is securely held in place by a steel snap ring. 108 mm long.

Pocket Clip Driveshaft Standard Screwdriver Ref: 2058

Pocket Clip Driveshaft Handle Only Ref: 2057

Pocket Clip Driveshaft Set (All 8 drivers listed) Ref: 2059



#### ▲ Replacement Driver Blades

Made of specially formulated steel using a special hardening process to minimise chipping and bending.

Standard/Narrow Driver Blade 1.6mm x 2.2mm Ref: 2090

Fine Flat Tip Blade 1mm x 1mm Ref: 2091

Phillips Small/Medium Blade Ref: 2092

Fine Phillips/Flat Blade 2.2mm x 2.5mm Ref: 2095

Standard Hex Nut 2.3mm Wrench Tip Ref: 2094

Screw Extractor Small/Medium Blade 1.1mm x 1.5mm Ref: 2093

Star Nut Small 2.2mm Wrench Tip Ref: 2096

Star Nut Large 2.8mm Wrench Tip Ref: 2097



### ▲ Deluxe Screwdriver Set

Ref: CT31359A

Set contains 9 screwdrivers and locknut drivers: Flat head x 2 (1.6, 1.8), Cross head x 2 (1.5, 1.8), Locknut drivers x 5 (2.02, 2.32, 2.52, 2.57, 2.82). Supplied in display box.



### ▲ Screw Ring Set

Ref: BA-200

Set of 5 finger-worn screwing rings, to block one side of the screw/nut being worked on (hexagonal, flat and crosshead).



### ▲ Screwdriver, Nut Wrench and Screw Ring Set

Ref: TO-220

Set contains 5 handles and 9 drivers: Flat head x 2 (1.5, 1.7), Cross head x 2 (1.5, 1.7), Star wrench x2 (2.5, 2.8), Hexagonal wrench x2 (2.0, 2.0), Square wrench x1 (2.2). Also 5 finger-worn screwing rings, to block one side of the screw/nut being worked on (hexagonal, flat and crosshead). Supplied in wooden display box.



### ▲ Screwdriver/Locknut Driver Set Ref: CT31304

Set contains three slot screwdrivers 1.5, 1.7 and 2.00, three cross point, 000, 00 and 0, four locknut drivers, 2.0, 2.3, 2.5, and a handle for the drivers. All in a plastic case which has an in-built storage area for screws.



### ▲ Tool Kit - Small

Ref: CT31101-2

A hard case with carrying handles which contains seven pliers, two locknut drivers, one slot screwdriver, one cross screwdriver, reamer, and a supra mounting tool. Size: 290mm x 210mm.



### ▲ Tool Kit - Large

Ref: CT31102-2

A hard case with carrying handles which contains eight pliers, two locknut drivers, one slot screwdriver, one cross screwdriver, small flat file, reamer, supra mounting tool and a screw trimmer. Size: 360mm x 260mm.





#### ▲ Combo Chain Nose Round/Delrin Plier

Ref: 1012V Guild

A 'must have' plier that is a dispensing favourite! Use it to adjust the angle of the end piece without marring the frame. The 8mm wide exclusive dovetail Delrin pad protects the frame surface. The round metal jaw tapers to a fine point to fit into tight spaces.



#### ▲ Combo Chain Nose Flat/Delrin Plier

Ref: 1013V Guild

The classic combo! Use it to adjust the angle of the end piece without marring the frame. The 8mm wide dovetail Delrin pad protects the frame surface. The flat metal jaw tapers to a fine point to fit into tight areas. With a hand-conforming pistol grip handle with spring open action.



#### ▲ Long Nose Chain Plier

Ref: 1040V Guild

Flat and smooth inside, rounded outside, these jaws are tapered to a fine point for shaping and bracing. Adjusts bridges, pad arms and temples, or simply makes picking up a screw easy.



#### ▲ Wide Jaw Angling Plier

Ref: 1009V Guild

Best bet for adjusting pantoscopic tilt and temple angles on all types of frames. Opens extra-wide to accommodate large temples and hinges. The recessed hole in each jaw protects the hinge screw.



#### ▲ Finger Piece Plier

Ref: 1045V Guild

Securely grip the hinge or end piece on a metal frame to modify the temple angle for proper pantoscopic tilt. Lock onto metal temples with the opposing grooves in the jaws to make adjustments. Also used to grip the front of a plastic frame that has a shield. Recessed holes in the jaws protect the hinge screw.



#### ▲ Wire Bracing Plier

Ref: 1008V Guild

Non-marring jaws are grooved for a tight grip while bracing and adjusting round wire frame components and round metal temples. Great for bracing rimless while making adjustments and adjusting some pad arm styles. The Guild style features two groove diameters: 1mm and 2mm.



▲ **Double Delrin Jaw Plier**

Ref: 1015V Guild

Use to grip plastic or metal frames when bending temples or altering the eyewire. Superior Delrin pads are only 8mm wide, allowing you to get into restricted spaces. The pads are dovetailed so replacing them is quick and easy.



▲ **Screw and Nut Rimless Bracing Plier**

Ref: 1016V Guild

Fearlessly adjust a screw and nut rimless mounting without cracking the lens! Our exclusive dovetail Delrin padded jaw has a channel that holds the screw head without scratching the lens. The slotted metal jaw securely grips the glass screw at the retaining nut. With the mounting held firmly you can safely adjust the end piece, the temple, or the bridge.



▲ **Rimless Compressing/Bracing Plier**

Ref: 1050V Guild

The master plier for assembling, tightening and bracing the screwless, rimless compression frames. Opposing Delrin jaws are dual grooved to cradle the metal and plastic components on both the horizontal and vertical axis, minimizing the risk of slipping and scratching the lens. One jaw pivots to compensate for base curve so the post and tubing compress in unison. Opens extra wide for thick lenses.



▲ **Eyewire Forming Plier**

Ref: 1010V Guild

Delrin pads gently but firmly shape the metal eyewire to conform to the base curve of the lens. Safe to use on polyamide or lightly warmed plastic frames. Exclusive screw-free dovetail pads eliminate the bother of replacing screw-on type pads and the possibility of the screw marring the frame.



▲ **Narrow Eyewire and Bridge Forming Plier**

Ref: 1011V Guild

The classic six base eyewire forming pad has been reconfigured to a narrow 15mm width for smaller frames. The diminutive Delrin jaw can be used to adjust the eyewire curve, alter the bridge size or adjust temple tips.



▲ **Screw Flaring Plier**

Ref: 1044V Guild

A quick and easy way to flare the end of a hinge screw to keep it from coming out of the hinge. A sturdy, sharp point flares the end of the screw while the hole on the opposite jaw protects the screw head. Prevents lost screws and eliminates patient and dispenser inconvenience.



#### ▲ Narrow Flush End Cutting Plier

Ref: 1027V Guild

Cutting the excess length from rimless compression tubing is easy and safe with the 5mm wide head. Rounded jaws prevent scratching the lens.



#### ▲ Sizing and Screw Inserting Plier

Ref: 5106F Guild (old ref: 1006V)

While holding the eyewire closed, you can easily insert and tighten the eyewire screw. This time saving plier reduces the possibility of damage to lenses or frames by keeping the screwdriver from slipping off the eyewire screw head.



#### ▲ Round/Flat Nose Plier

Ref: 1014V Guild

Known also as a 'half round' or 'looping plier', this tool has many applications. The most popular use is for adjusting 'American' pad arm curvature and nose pad height.



#### ▲ Nose Pad Adjusting Plier

Ref: 1030V Guild

The secure way to safely and easily adjust all types of nose pads. The cupped jaw for cradling the pad is matched to a slotted jaw for securely bracing the nose pad box and arm. Makes repositioning the nose pad easy.



Parallel Jaw pliers for unparalleled function. Entirely new configuration for 21st century eyewear designs. Jaws that close parallel are perfect for use on thick materials, grip more securely, and resist marring eyewear.

Parallel action jaws excel when making adjustments to the temple, barrel and front piece on any eyewear style or frame material, (conventional pliers with scissor-closing action could pinch thicker materials and mark the frame).

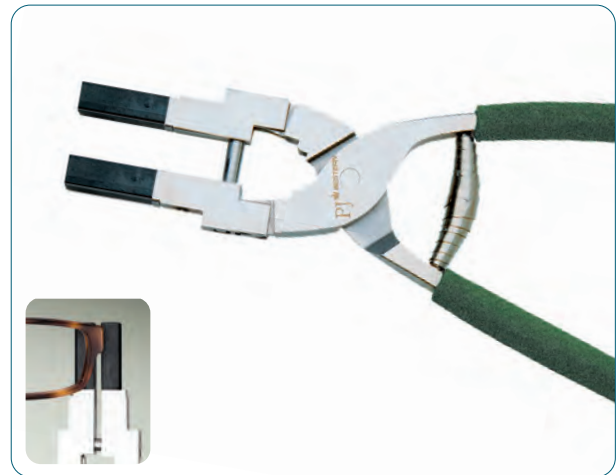
PJ Line pliers feature long, comfortable, foam-covered grips and narrow 8mm wide jaws that fit neatly in tight areas.



### ▲ PJ Temple Angling Plier

Ref: 5112PJ

A 'must have' plier that is a dispensing favourite! Use it to adjust the angle of the end piece without marring the frame. The 8mm wide exclusive dovetail Delrin pad protects the frame surface. The round metal jaw tapers to a fine point to fit into tight spaces.



### ▲ PJ Double Delrin Jaw Plier

Ref: 5115PJ

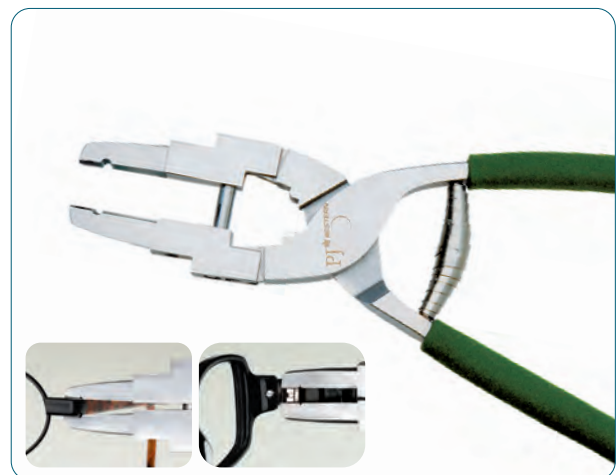
Use to grip plastic or metal frames when bending temples or altering the eyewire. Superior Delrin pads are only 8mm wide, allowing you to get into restricted spaces. The pads are dovetailed so replacing them is quick and easy.



Parallel closing jaws grip frame securely



Non-parallel jaws can damage thick frames



### ▲ PJ Pantoscopic Tilt Fingerpiece Plier

Ref: 5145PJ

Securely grip the hinge or end piece on a metal frame to modify the temple angle for proper pantoscopic tilt. Lock onto metal temples with the opposing grooves in the jaws to make adjustments. Also used to grip the front of a plastic frame that has a shield. Recessed holes in the jaws protect the hinge screw.



▲ **Double Nylon Jaw Plier**

Ref: DNJ/082

Nylon parallel jawed plier



▲ **LG Flat Nose Plier**

Ref: LGFN/081

Narrow parallel jawed plier



▲ **Parallel Jaw Flat Plier**

Ref: PJF/091

Nylon and narrow parallel jawed plier



▲ **Parallel Jaw Round Plier**

Ref: PJR/092

Narrow rounded parallel jawed plier



▲ **Pad Arm Curving Plier**

Ref: 2016V

Put the curve back into bent pad arms in one squeeze. The top jaw is concave and the opposing jaw is tapered to fit inside. Pressing the pad arm between the pre-formed jaws quickly creates the traditional pad arm curve.



▲ **Nose Pad Adjusting Plier**

Ref: 2030V

The secure way to safely and easily adjust all types of nose pads. The cupped jaw for cradling the pad is matched to a slotted jaw for securely bracing the nose pad box and arm. Makes repositioning the nose pad easy.



▲ **Combo Pad Arm/Nose Pad Adjusting Plier**

Ref: 2035V

Nose pad & pad arm adjusting tool all in a single plier. Specially designed jaws safely grab and adjust the nose pad and box. The unique jaw tips pinch the interior and the exterior of the pad arm to adjust its curvature.



▲ **Bridge Reducing Plier**

Ref: 2037F

Three jaws engage the bridge from above and below for extreme bridge reduction. Create a more comfortable fit and to reduce the PD. Useful for bending the eyewire to alter the base curve. For metal and plastic frames



▲ **Temple Bending Plier**

Ref: 2004F

A range of stepped Delrin plastic arcs aid you in easily curving end pieces on temples. Obtain the most comfortable and individualised bend for your patient.



▲ **Wire Bracing Plier**

Ref: 2008V

Non-marring jaws are grooved for a tight grip while bracing and adjusting round wire frame components and round metal temples. Great for bracing rimless while making adjustments and adjusting some pad arm styles.



▲ **Wide Jaw Angling Plier**

Ref: 2009V

Best bet for adjusting pantoscopic tilt and temple angles on all types of frames. Opens extra-wide to accommodate large temples and hinges. The recessed hole in each jaw protects the hinge screw.



▲ **Combo Round Chain Nose/Delrin Plier**

Ref: 2012V

Use it to adjust the angle of the end piece without marring the frame. The 8mm wide exclusive dovetail Delrin pad protects the frame surface. The round metal jaw tapers to a fine point to fit into tight spaces.



▲ **Combo Flat Chain Nose/Delrin Plier**

Ref: 2013V

Use to adjust the angle of the end piece without marring the frame. The 8mm wide dovetail Delrin pad protects the frame surface. The flat metal jaw tapers to a fine point to fit into tight areas. Traditional symmetrical handle with spring open action.



▲ **Round/Flat Nose Plier**

Ref: 2014V

Known also as a 'half round' or 'looping plier', this tool has many applications. The most popular use is for adjusting 'American' pad arm curvature and nose pad height.



▲ **Double Delrin Jaw Plier**

Ref: 2015V

Use to grip plastic or metal frames when bending temples or altering the eyewire. Superior Delrin pads are only 8mm wide, allowing you to get into restricted spaces. The pads are dovetailed so replacing them is quick & easy.



▲ **Tri-Angling Plier**

Ref: 2019V

Having trouble adjusting nylon cord rimless? The Tri-Angling Plier is the perfect tool for adjusting the temples without putting pressure on the endpiece. Use cellophane tape to protect the frame surface and then safely adjust without stressing the nylon cord or lens. An excellent tool for adjusting delicate corners or reshaping a clip-on to conform to the frame.



#### ▲ Barrel Aligning Plier

Ref: 2033V

Quickly straighten bent barrels and correct the spacing so barrels align properly.



#### ▲ Curved Tip Nose Chain Plier

Ref: 2039V

A classic general-purpose plier with curved jaws that taper to a fine point. Ideal for gripping in hard to reach areas.



#### ▲ Long Nose Chain Plier

Ref: 2040V

Flat and smooth inside, rounded outside, these jaws are tapered to a fine point for shaping and bracing. Adjusts bridges, pad arms and temples, or simply makes picking up a screw easy.



#### ▲ Finger Piece Plier

Ref: 2045V

Securely grip the hinge or end piece on a metal frame to modify the temple angle for proper pantoscopic tilt. Lock onto metal temples with the opposing grooves in the jaws to make adjustments. Also used to grip the front of a plastic frame that has a shield. Recessed holes in the jaws protect the hinge screw.



#### ▲ Eyewire Closing Plier

Ref: 2007V

Also known as a 'sizing plier', this tool allows you to confirm proper lens size and shape by closing the eyewire without inserting the screw. Pointed jaws will not damage the eyewire screw barrel. Features replaceable points.



#### ▲ Eyewire Forming Plier

Ref: 2010V

Delrin pads gently but firmly shape the metal eyewire to conform to the base curve of the lens. Safe to use on polyamide or lightly warmed plastic frames. Screw-free dovetail pads eliminate the bother of replacing screw-on type pads and the possibility of the screw marring the frame.



#### ▲ Spring Hinge Plier Kit

Ref: 2018S PREMIUM

This simple to use tool set allows you to extend the spring hinge barrel to hold it in the open position. The self-locking plier makes it easy to align the temple with the frame front and insert the hinge screw. Single handedly assemble those frustrating spring hinge frames in seconds. Use the Universal Nut and Screw Grabber (5070 and 5075) to easily insert the hinge screw.



#### ▲ Lens Turning Plier 20mm or 25mm

20mm Ref: 2028V, 25mm Ref: 2029V

The traditional axis aligning plier with 25mm, or 20mm round pads (for smaller eyesizes), feature matching +4.00D base curves to reduce stress on the centre of high minus, thin centre lenses. The pads encapsulate the metal mounting bracket and their movement is restricted so there is no opportunity to accidentally scratch lenses. Lenses up to 90mm diameter.



▲ **Lens Splitting Plier**

Ref: 5027F

Removes display lenses from supra frames in a snap



▲ **Deblocking Plier**

For Block Hubs 15.75mm x 12mm Ref: 2001V, 12mm round Ref: 2002V, 15.5mm x 14.25mm Ref: 2003V



▲ **Deblocking Plier 15mm round**

Ref: 2005V

for Block Hub 15mm round



▲ **Deblocking Plier 15mm round with Metal Cap**

Ref: 2006V

for Block Hub 15mm round with Metal Cap



▲ **Oblique Head End Cutting Plier**

Ref: 2024F

This heavy-duty cutting plier has a 24mm long cutting edge. The head tapers to a fine point to cut screws flush in restricted areas. Use only on soft metals and plastics.



▲ **Side Cutting Plier**

Ref: 2026V

The narrow 15mm cutting edge and side cutting action gives easy access to hard to reach screws. Use only on soft metals and plastics.



▲ **Concorde Tungsten Carbide End Cutting Plier**

Ref: 5024F

These 'top of the line' cutters combine tungsten carbide steel cutting tips with military grade superior tensile-strength stainless steel. Comfortable foam-covered extra leverage handles provide precise control for nearly flush cuts. 13mm wide cutting edge and 6-1/2" long.



▲ **Concorde Tungsten Carbide Side Cutting Plier**

Ref: 5026F

These 'top of the line' cutters combine tungsten carbide steel cutting tips with military grade superior tensile-strength stainless steel. Comfortable foam covered extra leverage handles provide precise control for nearly flush cuts. 13mm wide cutting edge and 6-1/2" long.





▲ **Oblique Head End Cutting Plier for Hard Metals**

Ref: 2025V

Slices through stainless steel and other hard metals. The 22mm cutting edge is angled and tapered to a fine point for close cuts without damaging the frame. Made of tempered carbon stainless steel.



▲ **Rimless Post Pulling Plier**

Ref: 2020V

Safely disengages the bridge and temple from compression rimless lenses. Prevents lens breakage that results from the attempt to extract the post and tubing by hand.



▲ **Screwless Rimless Compressing Plier - Laboratory Use**

Ref: 2034V

Constructed to withstand the extra pressure of the initial assembling of compression rimless frames. Stationary Delrin jaws are dual grooved to cradle the metal and plastic components on both the horizontal and vertical axis, minimising the risk of scratching the lens. Finger bracing handle is designed for squeezing without slipping.



▲ **Rimless Tube Stripper Plier**

Ref: 3027V

Effortlessly remove compressed tubing from compression posts on rimless frames. Cutting blade gap is adjustable so you cut through the tube without biting into the metal post. Slot in jaw aids in removing cut tube from post.



▲ **Combo Round Chain Nose/Delrin Plier Micro Range**

Ref: 8012S

A 'must have' plier that is a dispensing favourite! Use it to adjust the angle of the end piece without marring the frame. The 8mm wide exclusive dovetail Delrin pad protects the frame surface. The round metal jaw tapers to a fine point to fit into tight spaces.



▲ **Double Delrin Jaw Plier Micro Range**

Ref: 8015S

Use to grip plastic or metal frames when bending temples or altering the eyewire. Superior Delrin pads are only 8mm wide, allowing you to get into restricted spaces. The pads are dovetailed so replacing them is quick and easy.



▲ **Nose Pad Adjusting Plier Micro Range**

Ref: 8030S

The secure way to safely and easily adjust all types of nose pads. The cupped jaw for cradling the pad is matched to a slotted jaw for securely bracing the nose pad box and arm. Makes repositioning the nose pad easy.



▲ **Nose Pad Inserting Plier**

Ref: 8031S

The secure way to safely and easily adjust all types of nose pads. The cupped jaw for cradling the pad is matched to a slotted jaw for securely bracing the nose pad box and arm. Makes repositioning the nose pad easy.



▲ **Nose Pad Popping Plier**

Ref: 8032S

Quickest, easiest and cleanest way to remove old push-in nose pads from the pad box without putting pressure on or distorting the pad arm, or breaking your nails!



▲ **Long Nose Chain Plier Micro Range**

Ref: 8040S

Flat and smooth inside, rounded outside, these jaws are tapered to a fine point for shaping and bracing. Adjusts bridges, pad arms and temples, or simply makes picking up a screw easy.



▲ **Finger Piece Plier Micro Range**

Ref: 8045

Securely grip the hinge or end piece on a metal frame to modify the temple angle for proper pantoscopic tilt. Lock onto metal temples with the opposing grooves in the jaws to make adjustments. Also used to grip the front of a plastic frame that has a shield. Recessed holes in the jaws protect the hinge screw.



▲ **Metal Glazing Plier**

Ref: PP100

Pulls glazing collets together to check lens size.



▲ **Bendsnipe Plier**

Ref: PP101

For those awkward places.



▲ **Pad Adjustment Plier**

Ref: PP103

Shaped jaws enable pads to be adjusted without damage.



▲ **Hard Wire Side Cutting Plier**

Ref: PP104

Toughened jaws to cut the harder types of frame materials. Smooth spring-return action.



▲ **Side Cutter Plier**

Ref: PP105

For standard wire cutting.



▲ **Lens Adjustment Plier**

Ref: PP106

Replaceable rubber pads: Small Ref: 106/1, Large Ref: 106/2



▲ **Round Nose Snipe Plier**

Ref: PP112

General use, bracing and shaping.



▲ **Screw Cutting Plier**

Ref: PP121

Standard range end cutting plier. Notch cut handles for improved grip.



▲ **Inclination (Nylon Jaw) Plier**

Ref: PP130

Temple adjustment (metal frames). Nylon jaw avoids damage. Replacement Jaw available.



▲ **Inclination Fine Jaw Plier**

Ref: PP131

Has nylon jaws as PP130, but metal jaw is thinner for the smaller more delicate frame. Replacement Jaw available.



▲ **Curved Holding Slotted Nylon Plier**

Ref: PP132

For holding metal sides during adjustments and assisting forming the bend on sides. Replacement Jaw available.



▲ **Rim Curving Plier**

Ref: PP133

Plastic jaws to adjust metal eye rims to follow lens curvature. Replacement Jaw available.



▲ **Diagonal Cutter Plier**

Ref: PP151

Ideal for awkward rimless screws.



▲ **Half Round Long Nose Snipe Plier**

Ref: PP152

All purpose plier with extra long nose for difficult-to-get-at places.



▲ **Holding Nylon Plier**

Ref: PP161

Flat holding plier for plastic or metal frames. Nylon pads on both jaws. Replacement Jaw available.



▲ **Flat Nose 4mm Plier**

Ref: PP171

Used for general purposes, particularly useful for holding temples on thin metal frames.



▲ **Peening Plier**

Ref: PP172

Screw and rivet flaring plier with interchangeable pin and flat anvil.



▲ **Block Remover Plier**

Ref: PP173

For removing the adhesive pad holder or rubber sucker after lens edging.



▲ **Block Removing Plier**

Ref: PP174

Stainless steel construction. Notched hand grips. 90° grip reduces chances of marking lens.



▲ **Locking Jaw Plier**

Ref: PP-209/B

Stainless steel plier with locking jaws for holding screws. 140mm long.



▲ **Setting Plier**

Ref: PP-182/S

Flat ended parallel plier. 140mm long.



▲ **Nose Pad Adjusting Plier**

Ref: PI-196/S

With one nylon jaw, especially useful for soft silicone nose pads. Replacement jaw available.



▲ **Bent Front Cutting Plier**

Ref: PI-199/C

For cutting plastic plastic staple sockets. Not for cutting metal.



▲ **Assembly Plier**

Ref: PI-207/C

Enables circles of frames to be brought together, to set assembly screws. The screw is inserted in the hollow of one of the jaws, and tightened with a long-bladed screwdriver. 135mm long.



▲ **Cutting Plier**

Ref: PI-215/E

For cutting plastic plastic staple sockets. Not for cutting metal.

## Lens Blocks



▲ Briot / Weco Flexible Clamp Button 25mm Round  
Ref: 1138162



▲ Briot / Weco Flexible Clamp Button 19mm Round  
Ref: 1138161



▲ Briot / Weco Flexible Clamp Button 17mm Oval  
Ref: 1138171



▲ Briot Flexible Clamp Button 16mm Oval  
Ref: 1138195



▲ Briot Blue Magnetic Block 25mm Round  
Ref: 1153026



▲ Briot Blue Magnetic Block 19mm Round  
Ref: 1153027



▲ Briot Blue Magnetic Block 17mm Oval  
Ref: 1153028



▲ Briot Blue Magnetic Block 16mm Oval  
Ref: 1153038



▲ Universal Star Block Plano 25mm Black Round  
Ref: WE/88



▲ Universal Star Block 3 Base 25mm Yellow Round  
Ref: WE/89



▲ Universal Star Block Base 9 25mm White Round  
Ref: WE/91

## Adhesive Pad and Cup Holders



▲ Takubo DD5  
Ref: LS2/LD-3



▲ Takubo 510 600M/V2  
Ref: LS2/LD-3A



▲ Takubo DD5/DD8  
Ref: LS2/LD-4



▲ Hoya 4B  
Ref: LS2/LD-4B



▲ AO Nikon 4C  
Ref: LS2/LD-4C



▲ Takubo 510 600M/V2  
Ref: LS2/LD-4F



▲ Adhesive cup 1 Black No.1  
Ref: LS2/LD-4N



▲ Adhesive cup 2 Black No.2  
Ref: LS2/LD-4NA

## Suction Cup Holders



▲ Takubo DD8  
Ref: LS2/LB-13



▲ Hoya  
Ref: LS2/LB-13B



▲ AO, Nikon  
Ref: LS2/LB-13C



▲ SANWA  
Ref: LS2/LB-13D



▲ Takubo 600M/V2  
Ref: LS2/LB-13F



▲ Essilor, new type  
Ref: LS2/LB-13G

## Suction Pad Holders



▲ Takubo LD-3  
Ref: LS2/LD-3



▲ Takubo 510 600M/V2  
Ref: LS2/LD-3A

## Blocking Buttons



▲ Takubo Clear Half eye button  
Ref: 600M/6H-4N



▲ Takubo Clear Half eye button  
Ref: 600M/6H-4NW

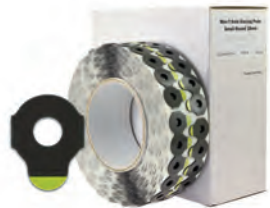
**Hydrophobic Pads**

**Max-T Gold**

A specially engineered adhesive that attaches to super-hydrophobic and oleophobic top coatings. Roll of 1,000



▲ **Max-T Gold Oval 17mm**  
Roll of 1,000. Ref: WE/39D



▲ **Max-T Gold Small Round 18mm**  
Roll of 1,000. Ref: WE/39B



▲ **Max-T Gold Large Round 24mm**  
Roll of 1,000. Ref: WE/39A



▲ **Max-T Gold Half Eye 20mm**  
Roll of 1,000. Ref: WE/39C

**Standard Pads**

**Edge-It**

Quality thin pads ideal for hi-index resin lenses and multicoated lenses. Roll of 1,000



▲ **Edge-It Oval 17mm**  
Roll of 1,000. Ref: WE/43D



▲ **Edge-It Small Round 18mm**  
Roll of 1,000. Ref: WE/43B



▲ **Edge-It Large Round 24mm**  
Roll of 1,000. Ref: WE/43A



▲ **Edge-It Half Eye 20mm**  
Roll of 1,000. Ref: WE/43C

**Premium Pads**

**3M Leap III**

These pads offer slip resistance, keeping lenses firmly in place during edging. Something customers have come to expect from 3M. Designed for WECO flexible blocks.



▲ **3M Leap III Oval 17mm**  
Roll of 1,000. Ref: 1712NR



▲ **3M Leap III Small Round 18mm**  
Roll of 1,000. Ref: 1693M



▲ **3M Leap III Large Round 24mm**  
Roll of 1,000. Ref: 1695M



▲ **3M Leap III Large Round 26mm**  
Roll of 1,000. Ref: 1692M



▲ **3M Leap III Half Eye 18mm**  
Roll of 1,000. Ref: 1696M



▲ **3M Leap III Square 24mm**  
Roll of 1,000. Ref: 1700M



▲ **Edge III Large Round 24mm**  
Premium adhesive edging pads suitable for all kinds of lenses - a perfect all rounder. Roll of 1,000. Ref: WE/43A



▲ **SIP Clear Surface Improvement Pad**  
Surface improvement pads for hydrophobic coated lenses. Roll of 500, 40 x 26mm. Ref: WE/33E



▲ **GSIP Gold Surface Improvement Pad**  
Ultra-sticky surface improvement pad for the most challenging slippery coatings on the market. Can be used front and back. Roll of 500, 40 x 26mm. Ref: WE/33G



▲ **Blue Lens Former**  
Ref: CT8903  
Box of 100. Size: 68 x 58 x 1.5mm.

## Plastic



▲ **1st Fine 1000 Grit Compensated**  
83mm Ref: CFP/11  
250 per roll.



▲ **1 Step Fining 1200 Grit Compensated**  
83mm Ref: CFP/26  
250 per roll.



▲ **Yellow Polishing for high index plastics**  
89mm Ref: G3A5  
250 per roll.



▲ **Lens Grip Spray**  
For use with hydrophobic coated lenses. 100ml bottle.  
Ref: 0400-114

## Polycarbonate



▲ **Sapphire Polishing**  
89mm Ref: CSP  
1000 per roll.

## Glass



▲ **White Polishing**  
83mm Ref: PPBH/83  
1000 per roll.



▲ **White Polishing**  
89mm Ref: PPBH/89  
1000 per roll.



▲ **Medium Wyron**  
76mm Ref: WMC/41A  
250 per roll.



▲ **Black 1000 8-leaf**  
77mm Ref: CFP/21  
1000 per roll.





▲ **Defoamer**

Ref: WE/4

Added to generator and edger reservoirs, it breaks the surface tension that occurs in water, allowing solids to penetrate the surface and drop to the bottom. 32 fl oz. bottle.



▲ **Coolant Oil**

Ref: WE/170

For generating, surfacing and glazing. Specially formulated to lubricate and reduce friction on all types of diamond wheels. 5 litre container.



▲ **NUC II Organic Lens Polish**

Ref: WE/51C

1 Gallon container.



▲ **Foamdoctor - silicon free**

Ref: WE/53

A high efficiency, anti-foaming agent. Suitable for all glazing and surfacing applications. 5 litre container.



▲ **Cerox**

Ref: WE/050A

20Kg container.



▲ **Abralox Powder**

P15 Ref: WE/49

P20 Ref: WE/49

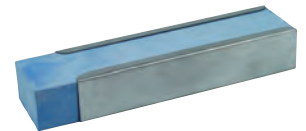
Polishing powder. 25Kg container.



▲ **Metaflow 117**

Ref: WE/63

47°C blocking alloy for glass and plastic.



▲ **Polishing Stick**

Ref: AP1/AP-83



▲ **Blue dressing stick**

Ref: WE/62



▲ **White dressing stick (Fine)**

Ref: WE/61



▲ **Polish (Light Brown)**

Ref: WE/204



▲ **Polish (Brown)**

Ref: WE/205



**Takubomatic**

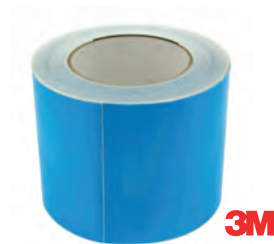
▲ **Buffing Wheel**

For Takubomatic machines only.  
Ref: AP1/AP-80



▲ **Surface Guard Hi-Tack**

35M roll Ref: WE/36  
Surface Guard Hi-Tack Clear.



▲ **3M Surface Saver Tape**

45M roll Ref: WE/34  
Surface Saver Blue.

## Lightbulbs



▲ **Bausch & Lomb**  
250v 15W

WE/175



▲ **Inami/Eyco**  
250v 15W

WE/157



▲ **AIT 501 marker**  
6v 25W

501/11



▲ **LM6/LM7**  
240/250v 25W

WE/154



▲ **LM2/LMT3**  
250v 25W

WE/167



▲ **LM-5/6/7**  
240v 15W

WE/201



▲ **LMP-5**  
6v 15W

WE/158



▲ **Magnon**  
LM350

250v 15W  
LM100/01



▲ **Nikon**  
PL2

6v 15W  
WE/165



▲ **Shin Nippon**  
focimeter

240v 15W  
WE/240



▲ **Slit Lamp**  
6v 4.5 amp

WE/174



▲ **S**  
6v 20W

24727



▲ **LC2/LC1**  
6v 2 amp

ZG1/6



▲ **TL-3**  
6v 6W

WE/101

## Miscellaneous Spares



▲ Ink cartridge marker unit

Ref: LM770/0

Magnon code: 30281-3230



▲ Ink cartridge unit

Ref: LM770/08

Magnon code: 30281-3261



▲ Rubber top Nosepiece

Ref: LM770/07

Magnon code: 30281-M3237



▲ Sponge - Small

Ref: 1017-3016



▲ Sponge - Large

Ref: 1017-3018

**Takubomatic**

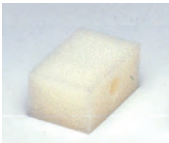


### ◀ Takubomatic NH30V Hand Edger

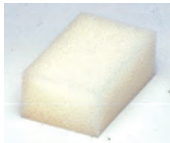
Ref: MC/037

- Forward and reverse wheel rotation.
- Self contained water tank.
- Available with standard and vee wheel configuration, or with choice of up to six wheel designs.
- Compact and lightweight.
- Simple and safe operation.

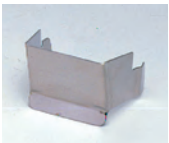
### NH30V Spare Parts



▲ Sponge (lower)  
Ref: NH30V/NH-11



▲ Sponge (upper)  
Ref: NH30V/NH-13



▲ Sponge cover  
Ref: NH30V/NH-26



▲ Belt  
Ref: NH30V/NH-9



▲ Diamond wheels (left to right)  
Fine flat wheel - Ref: NH30V/NH-22F  
Vee wheel - Ref: NH30V/NH-22V  
Fine flat wheel - Ref: NH30V/NH-30F  
Vee wheel - Ref: NH30V/NH-30V  
Fine & rough flat wheel - Ref: NH30V/NH-30W  
Rough flat & fine vee wheel - Ref: NH30V/NH-32WV  
Takubo vee wheel - Ref: NH30V/NH-32TV



◀ Water tank  
Ref: NH30V/NH-29



▲ Main switch (front)  
Ref: NH30V/NH-12



▲ Reverse rotation switch  
Ref: NH30V/NH-18



◀ Drain tank  
Ref: NH30V/NH-19

## Terms and Conditions of Sale

### 1. Definitions:

For the purpose of these terms "the seller" shall mean Norville (20/20) Ltd, "the buyer" shall mean the person, firm or company to whom the Seller agrees to sell or supply the goods (and if more than one the provisions hereof shall be binding on them jointly and severally), "the goods" shall mean all goods which are subject of any contract of sale or supply between the Seller and the Buyer; and the contract means the contract of the sale of goods.

### 2. General. All sales are made subject to these terms.

i. All quotations are given and all orders are accepted on these Terms, which supersede any other terms appearing in the Seller's catalogue or elsewhere and these Terms shall override and exclude any other terms stipulated, incorporated or referred to by the Buyer, whether in the order or in any negotiations or in any course of dealing established between the Seller and the Buyer.

ii. No modification to these terms shall be effective unless made by an express written agreement between the parties. The signing of the Seller of any of the Buyer's documentation shall not imply any modifications of these terms.

### 3. Suitability

All sales are made to the following terms and conditions and upon the express condition that, so long as the goods supplied are of sound commercial quality, there is no guarantee of their suitability for any specific purpose, even if that purpose is known to the seller. Product changes: The Seller reserves the right to make changes in design of modify or improve products without imposing obligations on itself to incorporate any such modifications or improvements into products previously manufactured. Where the buyer has specified that the goods shall be of a certain colour or size, such specification shall be subject to reasonable commercial variation, other than where specifically agreed with the seller.

### 4. Price

Unless otherwise expressly agreed in writing, the price of the goods shall be that ruling on the date of delivery. The Seller reserves the right to alter prices at any time prior to delivery.

### 5. Payment

Unless otherwise agreed in writing, payment is due within thirty days of the month in which the Goods are invoiced by the Seller without deduction or set off. Interest may be levied on all overdue amounts at the rate of 2% per month on the outstanding sum until payment is received after, as well as before, any judgement thereon. The Seller reserves the right to levy a charge for copies of invoices and statements.

### 6. Cancellation or Alteration

A charge will be made for all work carried out up to the time the order is cancelled or altered. It is not possible to cancel or amend orders placed by direct modem transmission.

### 7. Delivery.

i. All delivery dates are estimates only and the time of delivery shall not be the essence of the contract. The Seller shall not in any way be liable to compensate the buyer in damages or otherwise for non-delivery or late delivery of the goods or any of them for whatever reason or for any loss consequential or otherwise arising there from unless the Buyer's claims are submitted in writing.

- a.) For damages or partial loss in transit within 14 days of delivery.
- b.) For non-delivery of the whole consignment within 14 days of receipt of the monthly statement

ii. Unless otherwise agreed in writing the place of delivery shall be the Buyer's normal place of business.

iii. The Seller reserves the right to deliver the goods by instalments. Where delivery is made by instalments, each delivery shall be deemed for such purpose to be the subject of a separate contract and any failure whatsoever by the Seller in respect of any one delivery shall not entitle the Buyer to repudiate the contract or any instalment remaining to be delivered there under.

iv. A charge for carriage and packing will be levied on all orders. The Seller reserves the right, where specified deliveries are required, to charge all costs thereof in addition.

v. If the Buyer is unable to accept delivery of the goods at the time when the goods are ready for delivery, the Seller will, if its storage facilities permit, store the goods until actual delivery and the Buyer shall be liable to the Seller for the reasonable costs of such storage, including any addition to and not in substitution for any other payment or damages for which the Buyer may become liable due to its failure to take delivery at the appropriate date.

### 8. Passing of Risk and Property

i. The risk in the goods shall pass on to the Buyer on actual delivery.

ii. Title to the goods supplied shall remain with the Seller until the Seller has received the full purchase price of the goods or until the Buyer sells the goods to its customer by way of bona-fide sale at full market value in the normal course of business. The Buyer acknowledges that until such time the Buyer is in possession of the goods solely as bailee for the Seller.

iii. Until the buyer becomes the owner of the goods, the Buyer shall store and mark the goods so that they are readily identifiable as the Seller's property.

iv. The Buyer's right to sell the goods and to possession thereof shall immediately cease on the occurrence of any one or more of the events referred to in Clause 14 which would entitle the Seller, inter alia, to terminate the contract. On the occurrence of any such event the Seller (without prejudice to its other rights) shall be entitled to recover or re-sell the goods and for that purpose the Seller by its servants or agents may enter upon premises where the goods are or are believed to be stored and may repossess them.

### 9. Warranty

i. No condition is made or to be implied nor is any warranty given or to be implied as to the life or wear of the goods supplied or that they will be suitable for any particular purpose or for use under any specific conditions, notwithstanding that such purpose or conditions may be known to the Seller, unless and except as any specific written warranty may be given by the Seller. Where such a specific written warranty is given its terms shall be incorporated into and shall form part of these conditions and shall for all purposes be construed as such.

ii. The goods are warranted against defective material and workmanship under normal use and application. The Seller's liability in accordance with European Product Legislation.

iii. Save as provided herein, the Seller shall not be liable to the Buyer for any loss (including but not limited to consequential or economic loss), damage or expense of whatever nature and howsoever arising out of or in connection with the goods.

### 10. Returned Goods

The original order and delivery note must be returned with the goods when requesting credit or exchange and with goods returned for verification. No goods can be returned for credit except by prior arrangement. Unless the goods are returned due to faulty product or incorrect despatch a 10% charge will be levied. These conditions do not affect your statutory rights.

### 11. Patent Infringement

When the goods are made or adapted by the Seller in accordance with the Buyer's specifications the Buyer shall indemnify the Seller against all costs, claims and expenses incurred by the Seller in respect of the infringement by the goods of any patents, registered designs, trade marks or other rights belonging to third parties.

### 12. Limitation of Liability

The Seller's liability (if any) whether in contract or otherwise in respect of any defect in the goods or for any breach of this agreement or of any duty owed to the Buyer in connection herewith shall be limited to the price of the goods in question. The Seller shall not be liable for any loss of any duty owed to the Buyer arising from any damage to the goods occurring after the risk has passed to the Buyer however caused, nor shall any liability of the buyer to the Seller be diminished or extinguished by reasons of such loss.

### 13. Force Majeure

i. If the performance of the contract or any obligation thereunder is prevented by force majeure, a Seller shall be excused performance, provided that the Seller shall use reasonable endeavours to remove such cause or causes of non-performance, and shall continue performance hereunder without delay whenever such cause or causes are removed.

ii. For the purposes of these Terms, the expression "force majeure" includes Acts of God, strikes, lock-outs, other industrial action, fire, accident, lightning, earthquakes, storms, floods, explosion, war and any other circumstance, whether similar or dissimilar beyond reasonable control of the Seller.

### 14. Termination

If the Buyer makes default in any payment, or commits any breach of the terms and conditions of the contract, or suffers distress or execution, or becomes insolvent or commits an act of bankruptcy, or enters into any agreement or composition with his creditors, or goes or is put into liquidation, (other than solely for amalgamation or re-construction), or if administrative receiver or administrator is appointed over any part of the Buyer's business, or of a petition for administration order is presented to the court, the Seller may without prejudice to any rights which may have accrued, or which may accrue to it, at its option: a) require payment in advance for all or any further deliveries or b) suspend any further deliveries until such default or breach, if capable of rectification, is rectified or c) terminate and contract and/or d) terminate any other contracts which the buyer has placed with the Seller so far as goods remain to be delivered thereunder.

### 15. Miscellaneous

The contract between the Seller and the Buyer for the supply of goods shall be governed and construed in accordance with the laws of England and the Buyer agrees to submit to the Jurisdiction of the Courts of Law in England. No forbearance or indulgences shown or granted by the Seller to the Buyer shall in any way affect or prejudice the right of the Seller against the Buyer or be regarded as a waiver of these conditions.

When ordering items please quote the stock code where stated. Payment terms: 30 days net from invoice date. UK Minimum delivery cost: £4.00 per order. All goods are priced 'ex-warehouse'. We add an appropriate amount to cover postage, packing and insurance, depending on product ordered/weight and destination.

We welcome payment by the following credit cards:



PLEASE NOTE: MINIMUM INVOICE CHARGE IS £10.00. ALL PRICES ARE NETT AND EXCLUDE VAT AND CARRIAGE (a 10% handling charge will be applied on goods returned that are not faulty).

Please note: Some pictures include contents for illustration purposes only. Unless specifically stated, all items are supplied empty. Details correct at time of printing.



---

---

---

---

---

---

---

---

---

---

---

---

---

---

---

---

---

---

---

---

---

---

---

---

---

---

---

---

---

---

# www.norville.co.uk



## Online Ordering

- Customised product search engine
- Thousands of optical products online
- Selection, convenience and expertise
- Simple, safe and secure

**NORVILLE**

— AN INSPECTA GROUP PLC COMPANY —

**Norville (20/20) Ltd  
Waterwells Drive  
Gloucester  
GL2 2AA**

**Tel: 01452 510321**

**Fax: 01452 510331**

**Email: [sales@norville.co.uk](mailto:sales@norville.co.uk)**

**[www.norville.co.uk](http://www.norville.co.uk)**

*Norville (20/20) Ltd is based in Gloucester in the South-West of England. Our spectacle lens supply business was established over 60 years ago and is constantly being modernised to meet today's changing technology.*

*Norville operate a network of nationwide laboratories;  
the Gloucester, Edinburgh and Seaham.*